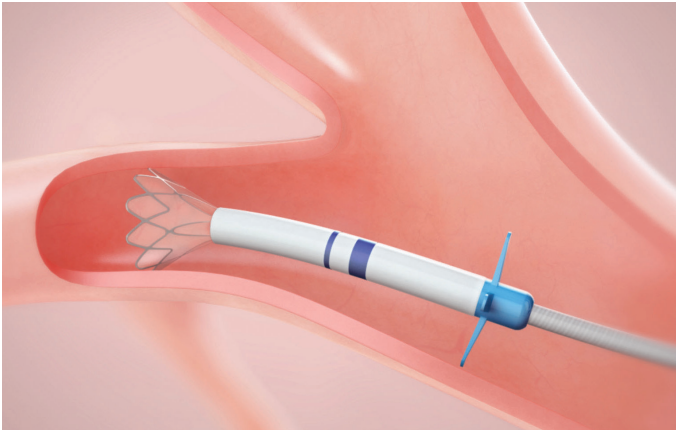


ZEPHYR® ENDOBRONCHIAL VALVE SYSTEM

AN INNOVATIVE NEW TREATMENT AT MICHIGAN MEDICINE

Interventional pulmonologists at Michigan Medicine offer unparalleled expertise in the Zephyr® Endobronchial Valve System, a new method for treating COPD and emphysema.



For patients with severe COPD or emphysema, a new treatment option known as the Zephyr® Endobronchial Valve System has proved successful in enhancing patient lung function, exercise capacity and quality of life.

Michigan Medicine is one of only a few hospitals in Michigan to offer this minimally invasive implantable bronchial valve for patients with severe COPD or emphysema who consistently feel short of breath despite using COPD medications and/or oxygen.

The Zephyr Valve technology is the latest therapy offered through the Interventional Pulmonology Program at Michigan Medicine, which is led by Jose De Cardenas, M.D. Working in a collaborative environment, our multidisciplinary team of pulmonologists, thoracic radiologists and thoracic surgeons determines the best treatment option based on a comprehensive evaluation of each patient.

During the minimally invasive Zephyr Valve procedure, a bronchoscope is used to implant tiny valves into the airways leading to the most damaged (emphysematous) areas of the lungs. These valves allow healthy portions of the lungs to expand, lifting pressure off the diaphragm to enhance breathing. The valve is designed to be a permanent implant, but can be removed, if necessary.

Candidates for the Zephyr Valve are patients who have a diagnosis of COPD or emphysema confirmed by a CT scan and who have not smoked for at least 4 months.

Patients not eligible for the Zephyr Valve include those who:

- Are unable to have a bronchoscopic procedure.
- Have an active lung infection.
- Are allergic to nitinol, nickel, titanium or silicone.
- Have not stopped smoking.
- Have an air pocket (bullae) greater than 1/3 of the size of the lung.

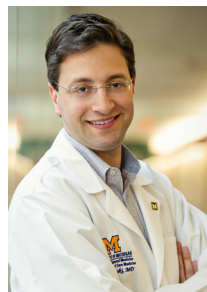
MEET OUR TEAM



Jose De Cardenas, M.D.



Meilan Han, M.D., M.S.



Wassim Labaki, M.D., M.S.



Catherine Meldrum, Ph.D., M.S., R.N.

For more information about the Zephyr® Endobronchial Valve System or any other services offered at Michigan Medicine, please contact M-LINE at 800-962-3555.