



MICHIGAN MEDICINE
UNIVERSITY OF MICHIGAN

the DDW Digest

Department of Internal Medicine, Division of Gastroenterology and Hepatology

Spring 2024 • Volume 18 • Issue 1

Faculty and Fellows in the News at DDW 2024

Chief Observations



Dear Faculty, Staff, Trainees, Alumni, and Friends,
It's May and that means it's time for GI & Hepatology's version of the Academy Awards – Digestive Diseases Week. DDW 2024 will once again provide an opportunity for Michigan faculty to shine. Our faculty will play key roles in a wide range of educational activities and report their groundbreaking research to clinicians and scientists from around the world. This year, our faculty will deliver an astounding 129 invited lectures (22) and scientific presentations (25 oral presentations and 82 posters). Of particular note, Allie Schulman (GLP-1 agonists and Endoscopy) will speak at the

ASGE Presidential Plenary Session scheduled for Saturday morning, May 18. Jessica Mellinger will enlighten us on alcoholic liver disease and Megan Adams will review the latest colorectal cancer screening guidelines at the AGA Postgraduate Course. Allie Schulman will discuss endobariatric therapies at the ASGE Postgraduate Course. UM faculty will play a prominent role in AGA section Distinguished Abstract Plenary (DAP) sessions. Jacob Kurlander's work will be featured on the Clinical Practice Section DAP and Jiande Chen's research on the Obesity, Metabolism and Nutrition DAP. John Wiley will be honored with the Research Mentor Award during the Neurogastroenterology & Motility Section DAP. Oral presentations by Prashant Singh and Shanti Eswaran will expand our understanding of the role of food in the illness experience and treatment of patients with Disorders of Gut-Brain Interaction. In this edition of DIGEST, we provide capsule summaries of some of the division's most impactful presentations. We also provide a full listing of invited lectures and scientific presentations by our talented and distinguished faculty. We hope that you use this document as a road map to plan your DDW experience and it helps you to stay on the cutting edge of the latest science and best practices for your patients. In between the exceptional science and education, I hope you can find time to join us at the annual University of Michigan DDW Reception on Saturday evening from 6-8 pm on the rooftop of the Cambria Hotel. I hope to see you all in DC and GO BLUE!!

William D. Chey, MD, AGAF, FACG, FACP, RFF
H. Marvin Pollard Professor of Gastroenterology
Chief, Division of Gastroenterology and Hepatology
Professor, Department of Internal Medicine
Professor, Department of Nutritional Sciences

The DDW 2024 Issue

Chief Observations	1
Announcements	2
2024 Leadership	3
National Leadership	4
Highlighted Abstracts	5
Presidential Plenary	11
Daily Schedule	12
Index	19

DDW 2024 Reception

GI & Hepatology Alumni Reception
Saturday, May 18
6:00 – 8:00 PM
Cambria Hotel, Convention Center
Rooftop



Pictured above: Bill & Janine Chey with first grandchild, Amelia Rose.



MICHIGAN MEDICINE
UNIVERSITY OF MICHIGAN

DDW 2024 Announcements

ACG Clinical Research Leadership Program

Joy Chang
Kira Newman
Prashant Singh

AGA Leadership Program: AGA FORWARD

Jorge Machicado

Career Development Awards

Jeffrey Berinstein: K23
Shirley Cohen-Mekelburg, K23
Jorge Machicado, ACG Junior Faculty Development Award
Andrew Read, KO8

Conversion from K to R Awards:

Jessica Mellinger
Nataliya Razumilava

2024 Leadership Roles



William D Chey, MD, FACG, AGAF, FACP, RFF
Vice President, ACG
Vice President, IFFGD



John Kao, MD
AGA Nominating Committee 2024-2025



Anna Lok, MD
Program Mentor, AGA FORWARD



Nataliya Razumilava, MD
Councilor, AGA GI Oncology Section



Joel Rubenstein, MD
AGA Nominating Committee 2023-2024



Allison Schulman, MD, MPH, FASGE
Chair, Association for Bariatric Endoscopy (ABE) through the ASGE



Elena Stoffel, MD, MPH
Chair, AGA GI Oncology Section



Grace Su, MD
Chair, AGA GI Oncology Section



MICHIGAN MEDICINE
UNIVERSITY OF MICHIGAN

UM GI & Hepatology: A Tradition of National Leadership

H. Marvin Pollard

President, AGA, 1959

Tachi Yamada

President, AGA, 1996

Grace Elta

President, ASGE, 2007

Richard Boland

President, AGA, 2011

John Allen

President, AGA, 2014

Anna Lok

President, AASLD, 2017

Bishr Omary

President, AGA, 2020

John Inadomi

President, AGA, 2021

John Carethers

President, AGA, 2022

Grace Su

President, AASLD, 2025

William D. Chey

President, ACG, 2026

Michael Lucey

President, AASLD, 2027

William D. Chey

Editor-in-Chief, American Journal of Gastroenterology, 2010-2015

Bishr Omary

Editor-in-Chief, Gastroenterology, 2011-2016

Elliot Tapper

Editor-in-Chief, Hepatology Communications, 2022-present

Megan Adams

Editor-in-Chief, GI & Hepatology News (2022-2027)



*ACG Capitol Hill Day 2024
Left to Right: Shanti
Eswaran, Bill Chey, Justin
Brandler, Jeffrey Berinstein*

Highlighted Abstracts DDW 2024

Analysis Of The Healthy Human Pancreas Reveals Frequent Neoplastic Lesions

Eileen Carpenter, Ahmed Elhossiny, Padma Kadiyala, Brian Griffith, Jay Li, Jiaqi Shi, Filip Bednar, Timothy Frankel, Marina Pasca Di Magliano

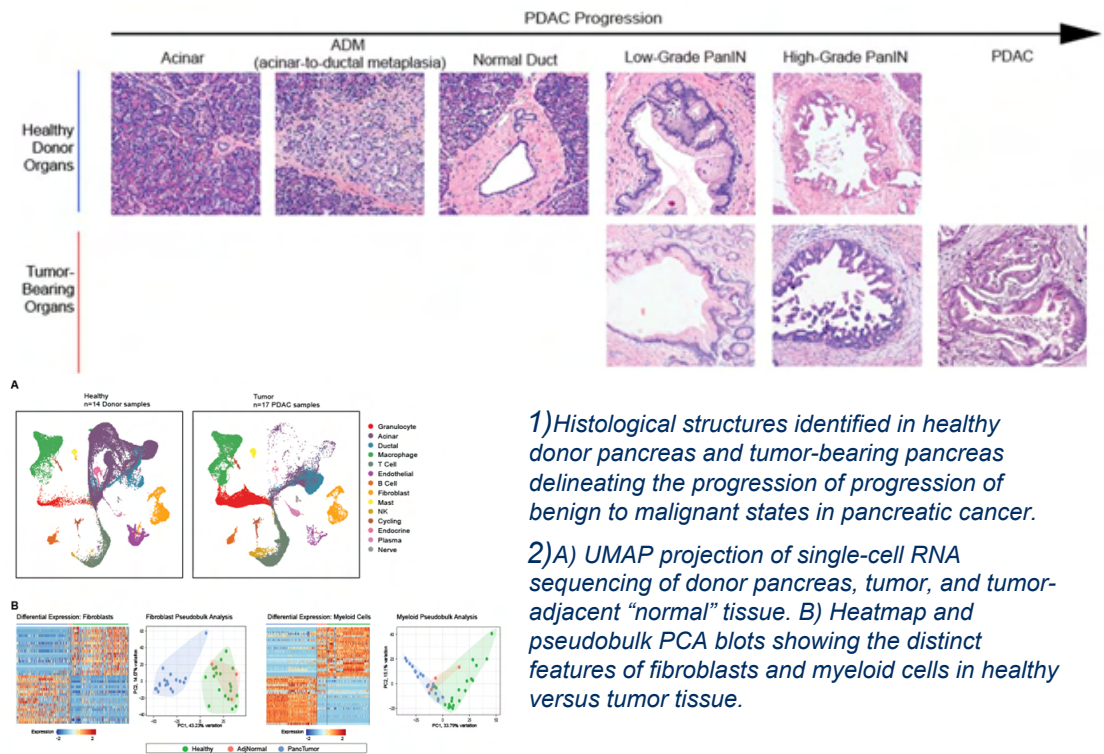
Translational Symposium

Innovations in Early Detection of Pancreatic Cancer

Tuesday, May 21, 2024

11:12 AM

152AB



1) Histological structures identified in healthy donor pancreas and tumor-bearing pancreas delineating the progression of progression of benign to malignant states in pancreatic cancer.

2) A) UMAP projection of single-cell RNA sequencing of donor pancreas, tumor, and tumor-adjacent "normal" tissue. B) Heatmap and pseudobulk PCA plots showing the distinct features of fibroblasts and myeloid cells in healthy versus tumor tissue.

- The adult healthy human pancreas has been poorly studied given lack of indication to obtain tissue from the pancreas in the absence of disease and rapid postmortem degradation.
- Through our partnership with our local organ donation procurement facility, we leveraged cutting-edge transcriptomic and spatial technologies to further our understanding of this organ prior to the development of pathologic disease.
- Acquisition of donor pancreata for research purposes was approved by the Gift of Life research review group. Donor pancreata not eligible for transplant or for whom there were no eligible recipients were collected for research. Upon arrival to the laboratory, the donor pancreas was dissected by a clinically-trained pancreatobiliary surgeon. Single cell RNA sequencing was performed using the 10x Genomics Platform. Spatial transcriptomics of FFPE blocks was performed using the GeoMX Nanostring Platform.
- Histopathological analysis of the samples surprisingly revealed pancreatic intraepithelial neoplasia (PanIN) lesions in over half of our cohort of 60 samples. PanIN, the most common precursor lesion to pancreatic cancer, is microscopic and cannot be detected with conventional radiology; thus, its prevalence in the general healthy population was previously unknown.
- Integrating single cell RNA sequencing and spatial transcriptomics, we compared healthy pancreata to pancreatic cancer and observed distinct transcriptomic signatures in the microenvironment of these tissues, particularly in the fibroblast and myeloid compartments. Examination of the epithelial compartment of neoplastic lesions revealed that PanIN cells from healthy pancreata were remarkably similar in transcriptional profile to cancer cells, suggesting that neoplastic pathways are initiated early in tumorigenesis.
- Further investigation to identify mechanisms that promote PanIN progression to malignancy bears important clinical significance, as results may have the possibility to be leveraged for early detection and therapeutic strategies.



Highlighted Abstracts DDW 2024

Exocrine Pancreatic Insufficiency Incidence At 12 Months After Acute Pancreatitis: A Prospective Multicenter Study

Anna E Phillips, Joseph Bejjani, Stacey Culp, Jennifer Chennat, Peter Lee, **Jorge D. Machicado**, Vikesh Singh, Elham Afghani, Phil A. Hart, Mitchell L Ramsey, Pedram Paragomi, Kimberly Stello, Georgios Papachristou

Research Forum

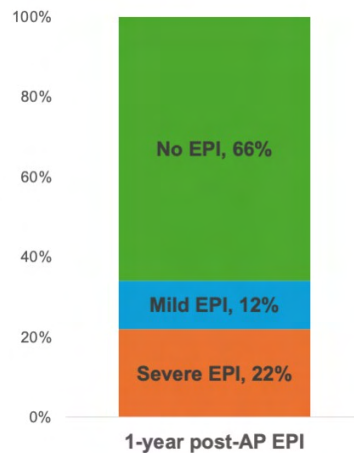
Exocrine Pancreatic Diseases and Diabetes Mellitus

Sunday, May 19, 2024

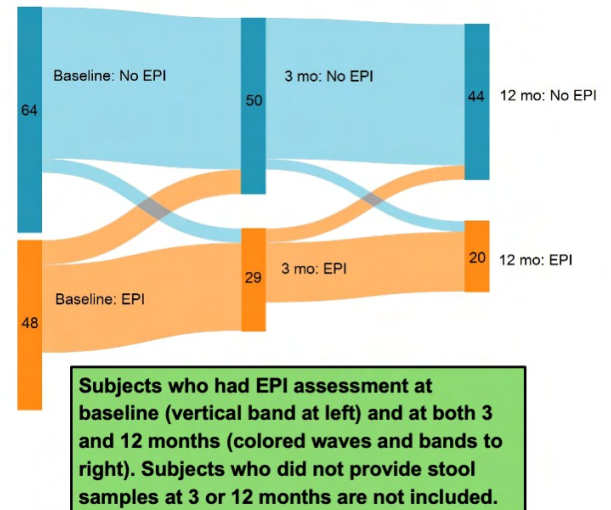
4:00 PM

145B

Incidence of mild and severe EPI after 1 year of AP (n=85)



Natural History of EPI as diagnosed by Fecal Elastase over 12 months following AP



- Although acute pancreatitis (AP) was traditionally considered a self-limited condition, emerging data has demonstrated that AP can lead to a long-term effect in pancreatic endocrine and exocrine function.
- PAPPEI (Post-Acute Pancreatitis Pancreatic Exocrine Insufficiency) was a longitudinal cohort study that aimed to evaluate the incidence of exocrine pancreatic insufficiency (EPI) after AP.
- Between 2017 and 2021, 112 patients with AP were enrolled at 3 US academic centers and provided fecal elastase during hospital admission. Of these, 85 patients provided fecal elastase at 12 months from enrollment.
- The 1-year incidence of EPI after AP was 34% (severe EPI in 22% and mild in 12%).
- Moderately severe or severe AP, idiopathic etiology, and pre-existing diabetes were independently associated with increased risk of EPI at 1-year of AP.
- EPI occurred not only in patients with moderately severe/severe AP, but also following mild interstitial AP; albeit, with lower incidence.
- In a quarter of patients with EPI at the time of AP hospitalization, pancreatic function spontaneously recovers over the subsequent year.



Highlighted Abstracts DDW 2024

Automated Body Composition And Liver And Spleen Analysis Are Associated With Mortality, Incident Cirrhosis, And Hepatic Decompensation In Metabolic Dysfunction-Associated Steatotic Liver Disease

Vincent L. Chen, Brian A. Derstine, Brian E. Ross, Binu Enchakalody, Peng Zhang, Grace L. Su

Topic Forum

Beyond The Biopsy: Advances In Non-Invasive Assessment Of MASLD

Monday, May 20, 2024

4:45 PM

202B

- Metabolic dysfunction-associated steatotic liver disease (MASLD) affects 1/3 of adults in the US and is a leading cause of end-stage liver disease
- MASLD is associated with obesity, but obesity is a crude way to measure body composition and may hide important subtleties in how fat, muscle, and other tissues affect outcomes
- Liver and spleen-related traits including size and shape may also affect prognosis in people with MASLD
- We used an automated platform to look at how body composition and liver/spleen traits affect risk of death and development of cirrhosis or decompensation in people with MASLD
- Several parameters were associated with liver-related complications, including spleen volume, liver volume and shape, muscle volume, and visceral and subcutaneous fat density
- Many parameters were also associated with mortality
- Compared to important clinical predictors including Fibrosis-4 score and body mass index, adding morphomics predictors resulted in markedly superior prediction of incident cirrhosis and mortality in MASLD

Outcome	Clinical only	Morphomics only	Clinical and morphomics	P value
Liver-related events (24 cases)	0.82 (0.72-0.91)	0.85 (0.76-0.95)	0.89 (0.80-0.99)	0.083
Incident cirrhosis (35 cases)	0.76 (0.68-0.85)	0.78 (0.67-0.89)	0.87 (0.77-0.96)	0.028
Mortality (75 cases)	0.77 (0.71-0.83)	0.83 (0.78-0.88)	0.85 (0.81-0.90)	0.00012



Highlighted Abstracts DDW 2024

Is A Simplified Low FODMAP Restriction Phase Possible? Results From A Multi-Center, Double-Blind, Pilot-Feasibility, Randomized Controlled Trial

Prashant Singh, Samuel Chey, Gregory Dean, Shanti L. Eswaran, Johanna Iturrino, Judy Nee, Vikram Rangan, Anthony Lembo, William D. Chey

Research Forum

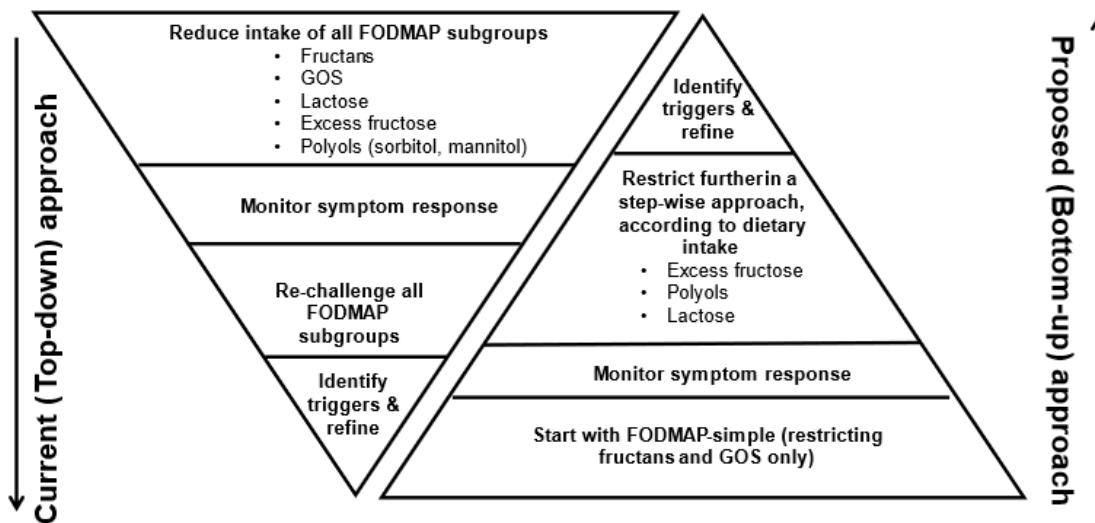
Irritable Bowel Syndrome Clinical

Saturday, May 18, 2024

4:12 PM

145B

- A low FODMAP diet (LFD) is the most evidence-based diet in the treatment of patients with irritable bowel syndrome (IBS) but is difficult to operationalize in clinical practice.
- We have reported that the FODMAPs most likely to trigger symptoms are fructans and galacto-oligosaccharides (GOS)
- In a double-blind, multi-center, pilot study, we compared the efficacy of a simplified version of LFD (FODMAP-simple), which only restricted fructans and GOS, with a traditional LFD (restricting fructans, GOS, fructose, lactose, and polyols) in patients with IBS
- In mITT analysis, FODMAP-simple and the traditional LFD led to similar benefits for abdominal symptoms including pain and bloating.
- FODMAP-simple was better tolerated and had fewer dropouts than the LFD.
- Less restrictive "bottom-up" strategies for the LFD deserve further study.



Highlighted Abstracts DDW 2024

Does The Mediterranean Diet Have Similar Efficacy As A Low FODMAP Diet In Irritable Bowel Syndrome? Results From A Pilot Randomized Controlled Trial

Prashant Singh, Sofia Iram, Samuel Chey, Samara Rifkin, **Gregory Dean**, Asaf Kraus, Christine Lothen-Kline, Jane Muir, Shanti L. Eswaran, William D. Chey

Research Forum

OMN Premier Abstracts

Tuesday, May 21, 2024

4:36 PM

151B

- A low FODMAP diet (LFD) improves global symptoms in patients with IBS but is a restrictive diet, and puts patients at risk for micronutrient deficiencies, and prolonged restriction.
- The Mediterranean diet (MD) with its overall health benefits has been proposed as a non-restrictive dietary approach to IBS but has never been directly compared with LFD.
- We compared the efficacy of an MD with LFD in a pilot-feasibility, randomized controlled trial.
- LFD & MD improved abdominal symptoms including pain & bloating in the majority of patients with IBS.
- Global endpoints trended towards greater benefit for the LFD than MD.



For patients with IBS



A low FODMAP diet (LFD) is effective but restrictive

Non-restrictive alternatives?



Mediterranean diet (MD) is not restrictive and has overall health benefits, but **does it work for IBS?**

MD vs. LFD in our study

- MD improved abdominal symptoms in the majority of patients with IBS
- The magnitude of abdominal and global symptom improvement with LFD was greater than MD
- Larger studies are needed before MD can be recommended in clinical practice for IBS



Highlighted Abstracts DDW 2024

Prevalence Of Disaccharidase Deficiency In Adults With Irritable Bowel Syndrome And Functional Diarrhea Analysis From A Multicenter, Prospective US Study

Shanti L. Eswaran, Samuel Chey, Brooks D Cash, William D. Chey

Research Forum

Food Intolerances,
Allergy, and
Sensitivities

Sunday, May 19,
2024

2:11 PM

149AB

Characterization of Disaccharidase Deficiencies

	Deficiency	Prevalance (%)
Lactase	72	36.2%
Sucrase	17	8.5%
Maltase	17	8.5%
Palantinase (Isomaltase)	13	6.5%
Glucoamylase	9	6.2%

- Disaccharidases are brush border enzymes that digest disaccharides to monosaccharides for absorption across the intestinal epithelium.
- Patients with disaccharidase deficiency (DD) may experience similar symptoms to IBS-D and functional diarrhea (FD), but the prevalence of DD in symptomatic adults is poorly defined.
- We performed a multicenter study assessing the prevalence of DD in patients with IBS-D and FD
- Disaccharidase (DA) enzyme activity was measured from small bowel biopsies obtained from 199 IBS-D and FD patients.
- The most common enzyme deficiency was lactase (see Table), but a substantial minority of patients had (9.5%) were identified with non-lactase deficiency.
- Disaccharidase deficiency may be an important and overlooked causes for symptoms in US patients with IBS-D or FD.



MICHIGAN MEDICINE
UNIVERSITY OF MICHIGAN

ASGE Presidential Plenary Sessions

Allison Schulman, MD: J. Edward Berk Award Lecture: State-of-the Art Presentation: The Skinny On GLP-1 Agonist And Endoscopy

Saturday, May 18, 2024, 9:44AM

Room: Ballroom C

Glucagon-like peptide-1 receptor agonists (GLP-1 RAs) are increasingly used for the management of diabetes and obesity due to their efficacy in glycemic control, cardiovascular risk reduction, and additional benefits like appetite suppression. These medications are known to delay gastric emptying and potentially increase the risk of retained gastric solid food contents, raising concerns about aspiration and airway compromise during endoscopic interventions. As the number of patients taking GLP-1 RAs increases exponentially, there continues to be ambiguity among practicing gastroenterologists regarding the management of these medications prior to procedures. This presidential plenary will review the data to date and provide more specific guidance on approaching and triaging endoscopic procedures.



The Division of Gastroenterology & Hepatology extends its heartfelt congratulations to these outstanding clinicians, scientists and mentors. We are indeed proud that they are part of our Michigan Family!!

Connect on Social Media



Find us on Facebook

U-M Gastroenterology and Hepatology Alumni Connection

@GIHepAlumni



Follow us on Twitter

@UMichGIHep



MICHIGAN MEDICINE
UNIVERSITY OF MICHIGAN

the DDW Digest

A daily schedule of MM activity at Digestive Disease Week® 2024

Department of Internal Medicine, Division of Gastroenterology and Hepatology

Rooms are in the Walter E. Washington Convention Center, unless indicated otherwise. Posters are listed by poster number, at the end of each day. The poster sessions are from 12:30 - 1:30 PM in Hall A.

SATURDAY, MAY 18

8:00 AM • Clinical Symposium **145A**

Best of DDW In Chinese

Moderator: John Kao

8:45 AM • Research Forum **152ab**

Tracing Pancreatic Tumor Evolution Through Space And Time

Ahmed Elhossiny, Padma Kadiyala, Jianhua Liu, Nicole Peterson, **Richard Kwon, Jorge D. Machicado, Allison R Schulman, Erik-Jan Wamsteker, George M Philips, Tara Hogenson, Jiaqi Shi, Timothy Frankel, Vaibhav Sahaj, Mark J Truty, Martin Ernesto Fernandez-Zapico, Filip Bednar, Marina Pasca Di Magliano, Eileen Carpenter**

9:44 AM • ASGE Presidential Plenary **Ballroom C**

J. Edward Berk Award Lecture: State-of-the Art Presentation: The Skinny On GLP-1 Agonist And Endoscopy

Allison R. Schulman

10:00 AM • Research Forum **152AB**

Artificial Intelligence in GI Cancer Screening and Therapeutics

Moderator: Ryan Stidham

10:00 AM • Clinical Symposium **151A**

Collaborative Care In Motility

Eric Dinesh Shah

10:12 AM • Debate **202A**

Alcohol Associated Liver Disease/Liver Transplant: Pro Argument

Jessica L. Mellinger

10:50 AM • Clinical Symposium **151B**

Incorporating A GI Expert Dietitian In A GI Academic Center (Case/Study/Demo)

William D. Chey, Amanda Lynett

11:15 AM • Clinical Symposium **151B**

Incorporating a GI Expert Dietitian into your GI Practice: Panel Discussion

Lauren Cornell, Tamara D. Freuman, Eric S. Goldstein, **William D. Chey, Amanda Lynett**

11:15 AM • Clinical Symposium **151A**

Multidisciplinary Approach to High Quality Care: Panel Discussion

Eric Dinesh Shah, Carolyn Newberry, Xavier Llor, David A. Leiman, Deepak V. Gopal

12:30 PM • Postgraduate Course Luncheon **151A**

A Review Of New CRC Screening Guidelines

Megan A. Adams

4:00 PM • Clinical Symposium **149AB**

American Gastroenterology Association Gender Equity Project

Moderator: Kira Newman

4:00 PM • Research Forum **140AB**

Deciphering the Innate Immune Landscape and Host-Microbial Interactions in IBD

Moderator: Shrinivas Bishu

4:00 PM • Clinical Symposium **147AB**

Donald O. Castell MD, Lecture: GERD diagnosis from Lyon to Chicago to Padova: Do all Roads Eventually Lead to Rome?

Moderator: Joan Chen

4:00 PM • Research Forum **101**

H Pylori And Gastric Cancer - Updates In Pathogenesis And Diagnosis

Moderator: John Kao

4:12 PM • Research Forum **145B**

Is A Simplified Low FODMAP Restriction Phase Possible? Results From A Multi-Center, Double-Blind, Pilot-Feasibility, Randomized Controlled Trial

Prashant Singh, Samuel Chey, Gregory Dean, Shanti L. Eswaran, Johanna Iturrino, Judy Nee, Vikram Rangan, Anthony Lembo, William D. Chey

4:48 PM • Research Forum **145B**

Efficacy Of A Novel, Discrimatory P-Value Based, IGG Assay-Guided Elimination Diet By IBS Subtype: Results From A Multicenter, Randomized, Double-Blind, Sham-Controlled Study

Prashant Singh, William D. Chey, Will Takakura, Anthony Lembo

4:55 PM • Postgraduate Course **Ballroom AB**

Epidemiology Of Alcohol Associated Liver Disease

Jessica L. Mellinger

POSTER SESSIONS • Saturday

Behavioral Therapy For Functional Heartburn: Recommendation Statements

Livia Guadagnoli, Rena Yadlapati, John E. Pandolfino, Alyse R Bedell, Anjali U. Pandit, Kerry Brandt Dunbar, Ronnie Fass, Richard Gervitz, C. Prakash Gyawali, Stephen Lupe, Megan Petrik, **Megan Elizabeth Riehl, Jessica K Salwen-Deremer, Madison L Simons, Kathryn N Tomasino, Tiffany Taft**

C-Reactive Protein Is A Better Predictor Of 90-day Colectomy Than Calculated Baseline Infliximab Clearance In Acute Severe Ulcerative Colitis

Daniel Aintabi, Priya Kathuria, Dustin Romain, Charlotte Larson, Nicholas R Tedesco, **Shirley Cohen-Mekelburg, Peter D.R. Higgins, Jeffrey Berinstein**

Comparing Serial And Current Liver Stiffness Measurements To Predict Decompensation In Compensated Advanced Chronic Liver Disease Patients

Yu Jun Wong, **Vincent L. Chen, Asim Abdulhamid, Tosetti Giulia, Huttakan Navadurong, Apichat Kaewdech, Jessica Cristiu, Michael W. Song, Thaninee Prasoppokakorn, Kai Le Ashley Tiong, Pooja Devan, Jean Ee Neo, Pimsiri Sripongpun, Catherine A. Stedman, Sombat Treeprasertsuk, Massimo Primignani, Jing Hieng Ngu, Juan Abraldes**

Development And Validation Of The "Pick-Up-Strics" Score To Predict Fibrostenosis In Patients With Eosinophilic Esophagitis Prior To Endoscopy

Joy W. Chang, Sean LaFata, Timothy S. Gee, Walker D. Redd, Trevor Barlowe, Cary C. Cotton, Swathi Eluri, Craig Conover Reed, Evan S. Dellon

Diagnostic Classification Systems for Disorders of Gut-Brain Interaction Should Include Psychological Symptoms

Michael P. Jones, Gerald J. Holtmann, Jan F. Tack, Florencia Carbone, **William D. Chey**, Natasha A Koloski, Ayesha Shah, Shrikant Ishver Bangdiwala, Ami D. Sperber, Olafur S Palsson, Nicholas J. Talley

Digital Assessment Of Family Cancer History In Outpatient Gastroenterology Settings Identifies Individuals At Risk For Hereditary Cancer Syndromes

Sarah Austin, Erika Hanson, Liliana Arida-Moody, **Tannaz Guivatchian**, Erika Koeppe, Elizabeth Rizzo, Jennifer Jane Griggs, Kenneth Resnicow, **Elena M. Stoffel**

Efficacy Of Fully Covered Self-expandable Metal Stents With Anchoring Double Pigtail Plastic Stents For Treatment Of Biliary Strictures: A Systematic Review And Meta-Analysis

Fadi Hawa, Alejandra Vargas, Priyata Dutta, Elit Quingalahua, Ricardo A. Marin-Tamayo, Ana Rosa Vilela Sangay, Jean M. Chalhoub, **Jorge D. Machicado**

Elucidating Three Distinct Treatment Preference Archetypes In Eosinophilic Esophagitis May Have Implications For Selecting Therapies

Joy W. Chang, Kelcie Brophy, Kerry A Ryan, **Joel H. Rubenstein**, Evan S. Dellon, Lauren P Wallner, Raymond De Vries

Gastrointestinal Intubation Using A Multi-Port Aspiration Catheter To Study Drug Release Of Extended-Release Glipizide Drug Products In The Gastrointestinal Tract Of Healthy Humans

Mohamed Abdelnabi, Lydia Watts, **Prashant Singh**, Ruiting Li, Ankhbayar Lkhagva, Shengnan Duan, Shuhan Liu, Bo Wen, Jason Baker, Aleksas Matvekas, **William D. Chey**, William L Hasler, Saeid Raofi, Wei-Jhe Sun, Heather Boyce, Minori Kinjo, Manjunath Pai, **Duxin Sun**, **Borko Nojkov**

Gender Disparities In Gastroenterology Authorship And Academic Roles

Aaron Tabibzadeh, Shahroz Fatima, Leah Kim, Kevin Liu, Amy Ou, Elissa Lin, Gregory Faulx, Sophia Popov, Vassil A. Popov, **Allison R Schulman**, Renee Williams, Violeta Popov

Intraoperative And Postoperative Outcomes In Tofacitinib-treated Acute Severe Ulcerative Colitis Patients Undergoing Total Abdominal Colectomy

Charlotte Larson, **Jeffrey Berinstein**, Dustin Romain, Nicholas R Tedesco, Priya Kathuria, Jakob Benedict Seidelin, Pernille Dige Ovesen, Mathieu Uzzan, Brad D Constant, Alaa El-Hussuna, **Peter D.R. Higgins**, Casper Steenholdt

Knowledge, Attitudes, Work And Training Experiences Related To Minoritized Sexual And Gender Identities Among Healthcare Workers In Gastroenterology And Hepatology In North America

Tzu-Hao (Howard) Lee, Nikki Duong, Douglas Simonetto, Sandra M. Quezada, Dennis J Spencer, Sonali Paul, **Kira L Newman**

Long-term Indwelling Plastic Stents (LTIS) Can Reduce Pancreatic Fluid Collections (PFC) Recurrence After Resolution With Endoscopic Transmural Drainage (ETD): A Retrospective Study

Fadi Hawa, Albert Ha, Esteban Urias, Zheyi Han, **Thomas Hunold**, **George M. Philips**, **Allison R. Schulman**, **Jorge D. Machicado**, **Richard Kwon**, **Erik-Jan Wamsteker**

Multiple Biosimilar Infliximab Switching Is Not Associated With Adverse Outcomes In Inflammatory Bowel Disease: A Real-World Effectiveness Analyses In A National U.S. Cohort

Jason Ken Hou, Codey Pham, Anthony Xu, Shubhada Sansgiry, Varsha Modi, **Akbar Waljee**

Non-Steroidal Anti-inflammatory Drugs (NSAIDs) Reduce Severity And Length Of Stay In Patients With Acute Pancreatitis (AP): A Systematic Review And Meta-Analysis

Alejandra Vargas, Priyata Dutta, **Fadi Hawa**, Jean M Chalhoub, Elit Quingalahua, Ana Rosa Vilela Sangay, Ricardo A. Marin-Tamayo, Antonio Mendoza Ladd, **Jorge D. Machicado**

Novel Automated Smart Toilet Allows Objective Longitudinal Assessment Of Bowel Movements - Preliminary, Home-Based, Experiences

Sonia Grego, Walker Gray Resney, Brian Stoner, Sameer K Berry, **William D. Chey**, **Borko Nojkov**

Patients With Cirrhosis View Ambulatory HCC Screening Results More Rapidly Than Providers, Especially Younger And White Patients

Beverly Kyalwazi, Jonathan Melendez-Torres, John Deng, Robert Turer, Timothy P. Hogan, **Elliot B. Tapper**, Donglu Xie, Sruthi Yekkaluri, Amit G. Singal, Jeremy Louissaint

Prevalence Of Steatotic Liver Diseases And Associated Risk Factors In Sexual And Gender Minorities In The United States

Tzu-Hao (Howard) Lee, George T. Cholankeril, Donghee Kim, Aijaz Ahmed, Fasiha Kanwal, Ruben Hernaez, **Kira L. Newman**

Preventive Effects Of Auricular Vagal Nerve Stimulation For Chemotherapy-Induced Constipation In Rats Based On RNA-SEQ Analysis

Sidan Long, Yan Wang, shuangshuang ji, **Shiyang Li**, **Jiande Chen**

Real-World Use Of Patient Reported Outcome Measures At A Large Tertiary Inflammatory Bowel Disease Center

Jessica L Sheehan, Laura Johnson, **Shirley Cohen-Mekelburg**, **Peter D.R. Higgins**

The Impact Of Age On Disorders Of Gut Brain Interaction

Tia Andrade, Vikram Rangan, Johanna Iturrino, **Prashant Singh**, Chethan Ramprasad, Subhash Kulkarni, Judy Nee, Anthony Lembo, Sarah Ballou

SUNDAY, MAY 19

8:00 AM • Clinical Symposium **152AB**

Coefficient Of Fat Absorption: Past, Present And Future

Matthew J. DiMagno
8:00 AM • Research Forum **202B**

Oropharyngeal and Esophageal Motility Disorders

Moderator: Joan Chen

8:00 AM • Translational Symposium **103AB**

Immuno-Oncology For The Gastroenterologist: Therapeutic Advances And Implications For Management

Moderator: Nataliya Razumilava

10:00 AM • Clinical Symposium **154AB**

The Role of Food in the Pathophysiology of Disorders of Gut-Brain Interaction

William D. Chey

SUNDAY, MAY 19 (cont'd)

10:00 AM • Clinical Symposium 154AB

Dietary Management of Gut Dysfunction

Moderator: **Shanti L. Eswaran**

10:00 AM • Research Forum 103AB

Neuroimmune Crosstalk in Gut Health and Disease

Moderator: **Prashant Singh**

10:35 AM • Clinical Symposium 146AB

AGA Guideline: Endoscopic Management Of Barrett's Esophagus

Perica Davitkov, **Joel H. Rubenstein**

10:37 AM • Debate 204ABC

Academic Debate 2 - Portal Hypertension

Brett E. Fortune, **Elliot B. Tapper**, Marina Serper

10:44 AM • Clinical Symposium 152AB

Mechanism Of Action Of The Endoscopic Sleeve Gastropasty

Allison R. Schulman

1:35 PM • Postgraduate Course Ballroom C

Endoscopic Bariatric Therapies (ESG, Ballons) - Current Options, Efficacy, And Long-Term Outcomes (Medical Vs. Endoscopic Vs. Surgical Data)

Allison R. Schulman

2:11 PM • Research Forum 149AB

Prevalence Of Disaccharidase Deficiency In Adults With Irritable Bowel Syndrome And Functional Diarrhea Analysis From A Multicenter, Prospective US Study

Shanti L. Eswaran, Samuel Chey, Brooks D Cash, **William D. Chey**

2:20 PM • Plenary Session 151B

The Effect Of A Multicomponent Intervention On Gastrointestinal Bleeding Risk In Patients Prescribed Warfarin: The Antivoagulation With Enhanced Gastrointestinal Safety (AEGIS) Randomized Trial

Jacob E. Kurlander, Danielle Helminski, Xueting Tao, **Sameer D. Saini**, Sarah L. Krein, Caroline R. Richardson, Kelley M. Kidwell, Michael Lanham, Jennifer L. Henstock, Raymond De Vries, Kenneth Resnicow, Nghi Ha, Brian Haymart, Constantina Alexandris-Souphis, James B. Froehlich, Geoffrey D. Barnes

2:54PM • Clinical Symposium 147AB

Refractory Constipation: Role Of Transit Testing And Anorectal Manometry

Eric Dinesh Shah, Satish S Rao

3:12 PM • Research Forum 149AB

What Is The Science To Elimination Diets In IBS

William D. Chey

3:15 PM • Research Forum 146AB

Population-Based Analysis Of Structural Determinant Of Fecal Incontinence Using Quantified And Partitioned Body Composition Metrics

Brent Hiramoto, Ahmed Elnaiem, Maysan Muftah, Ryan Flanagan, **Eric Dinesh Shah**, Walter Wai-Yip Chan

4:00 PM • Research Forum 145B

Exocrine Pancreatic Insufficiency Incidence At 12 Months After Acute Pancreatitis: A Prospective Multicenter Study

Anna E Phillips, Joseph Bejjani, Stacey Culp, Jennifer Chennat, Peter Lee, **Jorge D. Machicado**, Vikesh Singh, Elham Afghani, Phil A. Hart, Mitchell L Ramsey, Pedram Paragomi, Kimberly Stello, Georgios Papachristou

4:00 PM • Plenary Session 151B

Gastrointestinal Oncology (GIONC) Section Distinguished Abstract Plenary

Moderator: **Elena M. Stoffel**

4:12 PM • Clinical Symposium 147AB

Debate & Panel Discussion: Asymptomatic EOE Patient - Long-Term Therapy Is Not Needed

Joan Chen

4:30 PM • Research Forum 149AB

Patient Characteristics Are Associated With Response To ERCP For Sphincter Of Oddi Disorders, But Physician-defined Sod Subtypes Are Not: The Respond Longitudinal Cohort Study

Gregory A. Cote, Haley Nitchie, Badih Joseph Elmunzer, **Richard Kwon**, Field F Willingham, Sachin B. Wani, Vladimir Kushnir, Amitabh Chak, Vikesh Singh, Georgios Papachristou, Adam Slivka, Martin Lewis Freeman, Srinivas Gaddam, Priya A. Jamidar, Paul Randall Tarnasky, Shyam Varadarajulu, Lydia D. Foster, Peter B Cotton

POSTER SESSIONS • Sunday

A Machine-Learning Score In Indeterminate Fib-4 Score Predicts Advanced Fibrosis With VCTE And Prevalence Of Liver-Related Events In Two National Cohorts

Sebastian Niezen, Daniela Goyes, Timothy R. Morgan, Heather Patton, Zhenghui G. Jiang, Shari S. Rogal, **Elliot B. Tapper**

A Virtual Multidisciplinary-Care Program Improves Outcomes For Patients With Inflammatory Bowel Disease

Jeffrey Berinstein, Louise Babikow, John I. Allen, Gil Melmed, **Shrinivas Bishu**, Sameer K Berry

Associations Between Exercise Patterns And Clinical Outcomes In A Prospective Cohort Of Patients With Metabolic Dysfunction-Associated Steatotic Liver Disease

Blake Czaplá, Anushka Dalvi, **Vincent L. Chen**

Auricular Vagus Nerve Stimulation Ameliorates Gastric Hyperalgesia In A Validated Rodent Model

Ying Zhu, **Shuangsong Hong**, **Shiying Li**, **John W Wiley**, **Jiande Chen**

Cytokine Signatures In Post-ERCP Pancreatitis: A Pilot Study

Peter Lee, **Jorge D. Machicado**, Stacey Culp, Kimberly Stello, Phil A. Hart, Mitchell L Ramsey, Adam Lacy-Hulbert, Cate Speake, Zobeida Cruz-Monserrate, Badih Joseph Elmunzer, David C Whitcomb, Georgios Papachristou

Development And Pilot Testing Of A Novel Alcohol Use Disorder Training Program For Gastroenterology Fellows

Christopher L Coe, David Lawrence, Nicole Prause, Stephanie Aguirre, Jihane N Benhammou, Kamonica Craig, Tien Dong, Jenna K Kawamoto, Julio Meza, **Ponni Perumalswami**, Akshay Shetty, Jasleen Singh, Teresa Tan, Gail Thibodeau, Lin Chang, Arpan Arun Patel

Does Ursodeoxycholic Acid (UDCA) Help In Prevention Of Esophageal Varices In Patients With Primary Biliary Cholangitis (PBC): A Systemic Review And Meta-Analysis

Amna Iqbal, Zohaib Ahmed, Sahithi Chinnam, Umar Hayat, Muhammad Jahanzaib Khan, Dushyant Singh Dahiya, Hassam Ali, Sudheer M. Dhoop, Rayna Patel, Sana Rabeeah, Ahmed El Rahyel, **Robert J. Fontana**

SUNDAY, MAY 19 (cont'd)

Electrical Acustimulation At Acupoint ST36 Relieves Visceral Pain In A Rodent Model Of Chronic Pancreatitis

shuangshuang ji, Sidan Long, **Shiying Li**, Md Jahangir Alami, **Jiande Chen**

Exam Quality Of Liver Ultrasound And Dynamic Contrast-enhanced MRI And Impact On Early-Stage HCC Detection In Patients With Cirrhosis

Karim Seif El Dahan, Takeshi Yokoo, Mishal Mendiratta-Lala, David T Fetzer, Matthew S. Davenport, Darine Daher, Nicole E. Rich, Edward Yang, **Neehar Dilip Parikh**, Amit G. Singal

Impact Of Living With An Ileal-Pouch Anal Anastomosis: Netnography Of Individuals With Diverse Sexual Orientations And Practices

Darine Daher, Daniela Guerrero Vinsard, Ashok Kumbamu, **Kira L Newman**, Sunanda V. Kane, Victor G. Chedid

Machine Learning Advanced Fibrosis And At-risk Mash (ALADDIN) With A Web-based Calculator For Probability Prediction

Winston Dunn, Naim Alkhoury, Terry C. Yip, Laurent Castera, Vincent W. Wong, Grace L. Wong, Nipun Verma, Bihui Zhong, Ajay Duseja, Julie Dubourg, Stephen A. Harrison, Juan P. Arab, Syed-Mohammed Jafri, Ashwani K. Singal, **Vincent L. Chen**, Luis A. Diaz

Metabolomic Profiling Of Portal And Peripheral Venous Blood Demonstrates Impairment In L-Serine Abundance And Homocysteine Degradation Within Portal Venous Circulation For Patients With MASLD And Advanced Fibrosis

Thomas J. Wang, Shi Su, Durga Thakral, David Cohen, Marvin Ryou

Mortality Outcomes In Individuals With Metabolic Dysfunction-associated Steatotic Liver Disease With No Alcohol Consumption Vs Moderate Alcohol Consumption: A Nationwide Cohort Study

Majd B. Aboona, Pojsakorn Danpanichkul, **Vincent L. Chen**, Donghee Kim, Juan Pablo Arab, Karn Wijarnpreecha

Office-Based Testing For An Evacuation Disorder Using The Point-Of-Care Rectal Expulsion Device (RED) Supports Cost Effective Adoption Of The AGA/ACG Chronic Constipation Guideline

Eric Dinesh Shah, **William D. Chey**

Opposing Effects Of TM6SF2 Genotype On Hepatic And Cardiac Outcomes Based On Clinical Risk Factors In The UK Bioban

Vincent L. Chen, Antonino Oliveri, Chinmay Raut, Yanhua **Chen**, **Kelly Cushing-Damm**, **Elizabeth Speliotes**

Predictors Of Health-related Quality Of Life In Metabolic Dysfunction-steatotic Liver Disease In A Prospective Cohort

Anushka Dalvi, Blake Czaplá, **Vincent L. Chen**

Prevalence And Etiologies Of Non-Responsive Celiac Disease: A Systematic Review And Meta-Analysis

Nishant Aggarwal, Unnati Bhatia, Vignesh Dwarakanathan, Achintya D Singh, **Prashant Singh**, Vineet Ahuja, Govind K Makharia

Prevalence Of Cirrhosis And Extrahepatic Manifestations Among Lean And Non-lean Individuals With Metabolic Dysfunction-Associated Steatotic Liver Disease

Leith K. Ghani, Majd B. Aboona, Pooja Rangan, **Vincent L. Chen**, Cheng Han Ng, Daniel Huang, Mark Muthiah, Donghee Kim, Moises I. Nevah Rubin, Ma Ai Thanda Han, Michael B. Fallon, Karn Wijarnpreecha

Prognostic Accuracy Of Vibration-controlled Transient Elastography-Based Predictors In People With Diabetes And Obesity

Venkata Sai J. Jasty, Kai Le Ashley Tiong, Majd B. Aboona, Michael W. Song, Esteban Urias, Claire S. Faulkner, Pooja Devan, Jean Ee Neo, Karn Wijarnpreecha, Yu Jun Wong, **Vincent L. Chen**

Racial Disparities In Prevalence Of Cirrhosis And Extrahepatic Manifestations In Metabolic Dysfunction-Associated Steatotic Liver Disease

Majd B. Aboona, Leith K. Ghani, Pooja Rangan, **Vincent L. Chen**, Cheng Han Ng, Daniel Huang, Mark Muthiah, Donghee Kim, Moises I. Nevah Rubin, Ma Ai Thanda Han, Michael B. Fallon, Karn Wijarnpreecha

Regulation Of Gastric Epithelial Cell Transcriptional Programs By Bone Morphogenetic Protein Signaling

Andrea Todisco, Tsutomu Takeda, Justin Colacino, Maria Mao, Akihito Nagahara

Self-Stigma, Discrimination, And Inflammatory Bowel Disease Disclosure Are Associated With Disease Activity

Kira L Newman, **Jessica P Naftaly**, Patricia A Wren, Millie Dascomb Long, **Peter D.R. Higgins**

The Salivary Microbiome As A Noninvasive Screening Tool For Barrett's Esophagus

Jesus Mario Luevano, **Joel H. Rubenstein**, Rebecca Clare Fitzgerald, Anne-Catrin Uhlemann, Heekuk Park, Hossein Khiabani, Tal Korem, Julian A Abrams

Using Routinely Collected Patient Reported Outcome Measures To Efficiently Identify Mental Health Disorders In Inflammatory Bowel Disease Clinics

Jessica L Sheehan, Laura Johnson, **Shirley Cohen-Mekelburg**, **Peter D.R. Higgins**

MONDAY, MAY 20

8:00 AM • Plenary Session **Ballroom A**

AGA Clinical Science Plenary Moderator: **Elena M. Stoffel**

8:00 AM • Translational Symposium **145AB**

Emerging Tests for Screening/Early Detection of GI (and other) Cancers Moderator: **Neehar D. Parikh**

8:20 AM • Clinical Symposium **144ABC**

Chronic Fistulae: Plugging The Leak **Allison R. Schulman**

9:20 AM • Research Symposium **102AB**

Auricular Vagal Nerve Stimulation Improves Hyperglycemia By Enhancing Release Of Postprandial Incretin Hormones And Vagal Efferent Activity In Type 2 Diabetic Rats

Fei Li, Gao-Jue Wu, Yan Li, **Shiying Li**, Md Jahangir Alam, **Jiande Chen**

10:00 AM • State-of-the-Art-Lecture **201**

Nutrition, Frailty, Sarcopenia for the Cirrhotic Patient

Moderator: **Pratima Sharma**

10:42 AM • Topic Forum **143ABC**

Radiographic, Fluoroscopic, And Endosonographic Predictors Of Failed Endoscopic Ultrasound (EUS)-Guided Transgastric Stent Placement In Patients With Roux-en-y Gastric Bypass Anatomy

Benjamin M. Moy, Hero K. Hussain, Jessica X. Yu, **Kevin D. Platt**, **Richard Kwon**, **Jorge D. Machado**, **Erik-Jan Wamsteker**, **George M. Philips**, **Allison R. Schulman**

MONDAY MAY 20 (cont'd)

10:45 AM • Clinical Symposium 202A

Case-Based Synthesis: MET-ALD
Jessica L. Mellinger

12:30 PM • Meet-the-Professor Luncheon 140AB

Managing Leaks And Fistulas
Allison R. Schulman, Rashmi Advani

2:30 PM • Research Forum 140AB

Kynurenic Acid (KYNA) Levels Are Reduced In IBS-D, Resulting In Visceral Hypersensitivity: Role Of Microbial Dysbiosis
Shi-Yi Zhou, Jun Gao, Prashant Singh, Thomas M Schmidt, John W Wiley

2:30 PM • Clinical Symposium 151A

Part 2: Mystery Enterocolitis Cases: It Isn't Always What It Appears
D. Kim Turgeon, Karen Choi

3:15 PM • Topic Forum 201

A Global Survey On The Management Of Alcohol-Associated Hepatitis
Hanna Blaney, Nhi Le, Rokhsana Mortuza, Anand V. Kulkarni, Joaquin Cabezas, Elliot B. Tapper, Juan P. Arab

4:00 PM • Plenary Session 145B

Presentation Of Neurogastroenterology & Motility (NGM) Section Research Mentor Award: John W. Wiley, Md, AGAF
Shanthi Srinivasan, Braden Kuo, John W. Wiley

4:06 PM • Plenary Session 151A

Insulin Synthesis And Gene Expression Induced By Intestinal Electrical Stimulation Is Associated With MafA, PDX1 And Glut2 In Type 2 Diabetic Rats
Yan Li, Shiyang Li, Fei Li, Gaojue Wu, Jiande Chen

4:45 PM • Topic Forum 202B

Automated Body Composition And Liver And Spleen Analysis Are Associated With Mortality, Incident Cirrhosis, And Hepatic Decompensation In Metabolic Dysfunction-Associated Steatotic Liver Disease
Vincent L. Chen, Brian A. Derstine, Brian E. Ross, Binu Enchakalody, Peng Zhang, Grace L. Su

POSTER SESSIONS • Monday

A Multicenter Study Of The Real-World Effectiveness And Safety Of Risankizumab In Crohn's Disease

Manar Askar, Seema Belani, Jalpa Devi, Katherine Huang, Abdul Khan, Hyder Said, Anish Patel, Shrinivas Bishu, Richa Shukla, Marc Fenster, Ryan C Ungaro, Andres Yarur, Parakkal Deepak, Amanda M Johnson

Elevated Methylglyoxal Formation In Diabetes: Its Implication In Delayed Gastric Emptying And The Involvement Of Atp-Sensitive Potassium Channel
Shiyang Li, Gao-Jue Wu, Fei Li, Jiande Chen

Genetically Predicted Ulcerative Colitis Is Associated With Increased Risk For Clostridioides Difficile Infection

Kelly Cushing-Damm, Yanhua Chen, Xiaomeng Du, Annapurna Kuppa, Chinmay Raut, Antonino Oliveri, Vincent L Chen, Brett Vanderwerff, Matthew Zawistowski, Krishna Rao, Peter D.R. Higgins, Elizabeth K Speliotes

Health Outcomes, Discrimination, And Stigma Among Sexual And Gender Minority People With Inflammatory Bowel Disease

Kira L Newman, Patricia A Wren, Millie Dascomb Long, Peter D.R. Higgins

Histologic Diagnosis Of Pancreatic Cystic Lesions (PCLS) With Fine Needle Biopsy (FNB): Predictors Of Positive Histology And Effect On Treatment Decisions

Ankit Mishra, Dhiraj K Peddu, Thomas Hunold, George M Philips, Erik-Jan Wamsteker, Richard Kwon, Allison R Schulman, Jiaqi Shi, Eileen Carpenter, Jorge D. Machicado

Is It Time To Stop Performing Routine Endoscopic Sphincterotomies When Placing Biliary Stents? A Systematic Review And Meta-Analysis

Priyata Dutta, Elit Quingalaha, Ricardo Marin, Alejandra Vargas, Jean M. Chalhoub, Fadi Hawa, Jorge D. Machicado

Medications For Alcohol Use Disorder Are Increasingly Prescribed In Patients With Severe Alcohol-Related Liver Disease With A Favorable Safety And Tolerability Profile
Abhishek Shenoy, Venkata Sai J. Jasty, Sarah Nasser, Sarah Uttal, Robert J. Fontana

Real-World Treatment Patterns Among Newly Diagnosed Patients With Erosive Esophagitis In The US

Dhyanesh A. Patel, Nicholas . Shaheen, Bonnie Bui, Murali Gopal, Rinu Jacob, Benjamin Chastek, Christina Landis, Eric Dinesh Shah

Reducing Low Value Care: The Overuse Of Corticosteroid Premedication For Infliximab Infusions

Jeffrey Gibbs, Akbar K. Waljee, Brooke Kenney, Shirley Cohen-Mekelburg

Standardized Order Sets For Risk-based Colorectal Cancer Screening Increase Utilization Of Stool-based Test

Shanti L. Eswaran, Stacy B. Menees, Tammy Ellies, Elizabeth Spranger, Elena M. Stoffel

Trainee Participation And Outcomes In High-Risk ERCP: A Secondary Analysis Of The Stent Versus Indomethacin (SVI) Trial Dataset

Sachin B. Wani, Jingwen Zhang, Lydia D. Foster, Jose Serrano, Gregory A. Cote, Steven A. Edmundowicz, Raj J. Shah, Ji Young Bang, Shyam Varadarajulu, Vikesh Singh, Mouen A. Khashab, Richard Kwon, James M. Scheiman, Field F. Willingham, Steven Keilin, Georgios Papachristou, Amitabh Chak, Adam Slivka, Daniel Mullady, Vladimir Kushnir, James L. Buxbaum, Rajesh N. Keswani, Timothy B. Gardner, Nauzer Forbes, Amit Rastogi, Andrew Ross, Joanna K. Law, Patrick Yachimski, Yen-i Chen, Alan N. Barkun, Zachary L. Smith, Bret T. Petersen, Andrew Y. Wang, John R. Saltzman, Rebecca Spitzer, Jazmyne Gallegos, Case W. Brennan, Jack O'hara, Collins Ordiah, Cathie Spino, Valerie Durkalski-mauldin, Badih Joseph Elmunzer

TUESDAY MAY 21

8:00 AM • Research Forum 152AB

Epidemiology and Screening for Barrett's Esophagus and Gastric Cancer
Moderator: Joel H. Rubenstein

TUESDAY MAY 21 (cont'd)

8:00 AM • Research Forum 101

Pancreatic Cancer Biology and Clinical Therapeutics
Moderator: Eileen Carpenter

8:50 AM • Clinical Symposium 202A

How Can AI Expand And Enhance Our Research; Present And Future
Grace L. Su

10:00 AM • State-of-the-Art-Lecture 201

New Approaches to Hepatobiliary Cancers
Moderator: Grace L. Su

10:15 AM • Research Forum **Ballroom A**

Accuracy Of Real-time EUS-Guided Confocal Laser Endomicroscopy Interpretation For Discerning Specific Types Of Pancreatic Cystic Lesions: Insights From A Multicenter Prospective Study

Jordan Burlen, Daniel M Jones, Wei Chen, Stacey Culp, Samer El-Dika, Margaret G Keane, **Jorge D. Machicado**, Rahul Pannala, Mohamed O. Othman, Thiruvengadam Muniraj, Neil Sharma, Jessica Lynn Widmer, Shaffer Mok, Anjali Luthra, Mandeep Sawhney, Antonio Mendoza Ladd, Kavel Visrodia, Tamas A. Gonda, Phil A. Hart, Megan E Fry, Somashekar G Krishna

10:18 AM • Clinical Symposium 147AB

Risk Stratification In Barrett's Esophagus - From Screening To Therapy
Joel H. Rubenstein

11:12 AM • Translational Symposium 152AB

Analysis Of The Healthy Human Pancreas Reveals Frequent Neoplastic Lesions With A Distinct Microenvironment

Eileen Carpenter, Ahmed Elhossiny, Padma Kadiyala, Brian Griffith, Jay Li, Jiaqi Shi, Filip Bednar, Timothy Frankel, Marina Pasca Di Magliano

11:15 AM • Research Forum 151B

Symptoms Do Not Predict Sucrose Malabsorption On Breath Testing

Colin Wu, Katha Makwana, Samantha Proctor, Sarah Ballou, Vikram Rangan, Johanna Iturrino, **Prashant Singh**, Anthony Lembo, Judy Nee

11:15 AM • State-of-the-Art-Lecture 201

Paam For Hepatocellular Carcinoma Risk Stratification In Patients With Cirrhosis: Multicenter Phase 3 Biomarker Validation Studies In The U.S.

Naoto Fujiwara, Camden Lopez, Tracey L. Marsh, Indu Raman, Cesia A. Marquez, Subhojit Paul, Sumit K. Mishra, Naoto Kubota, Courtney Katz, Hiroaki Kanzaki, Michael Gonzales, Lisa Quirk, Sneha Deodhar, Pratibha Selvakumar, Prithvi Raj, **Neehar D. Parikh**, Lewis R. Roberts, Myron Schwartz, Mindie H. Nguyen, Alex Befeler, Stephanie Page-Lester, Jo Ann Rinaudo, Ziding Feng, Rajender Reddy, Saira Khaderi, Sumeet K. Asrani, Fasiha Kanwal, Hashem B. El-Serag, Jorge A. Marrero, Amit G. Singal, Yujin Hoshida

2:00 PM • Research Forum 146AB

Phase IIA Trial Of Encapsulated Rapamycin (ERAPA) In Patients With Familial Adenomatous Polyposis To Reduce Intestinal Polyp Burden: 6 Month Interim Results

Carol A. Burke, **Elena M. Stoffel**, Carole Macaron, John C. Fang, Peter P. Stanich, Randy Wright, Paul E. Wise, Gautam N. Mankaney, Ankur Tiwari, Kayleigh Herrick-Reynolds, Vance Sohn, N. Jewel Samadder

2:48 PM • Research Forum 152AB

Progressive Impairment Of Gastroduodenal Myoelectrical And Motor Activities And Autonomic Function During The Development Of Type 2 Diabetes In Rats

Gao-Jue Wu, Fei Li, Yan Li, **Shiying Li**, Md Jahangir Alam, **Jiande Chen**

4:32 PM • Topic Forum 150AB

The Multiview Perspective (MVP) Study: A Blinded, Tandem Prospective Trial Of Forward-View Versus Side-View Examination During ERCP

Steven N. Steinway, Kunal Jajoo, Raj Shah, **Thomas J. Wang**, Thomas R. McCarty, Noppachai Siranart, Pichamol Jirapinyo, Linda S. Lee, Christopher C. Thompson, Amit S. Grover, Marvin Ryou

4:36 PM • Research Forum 151B

Does The Mediterranean Diet Have Similar Efficacy As A Low FODMAP Diet In Irritable Bowel Syndrome? Results From A Pilot Randomized Controlled Trial

Prashant Singh, Sofia Iram, Samuel Chey, **Samara Rifkin**, **Gregory Dean**, Asaf Kraus, Christine Lothen-Kline, Jane Muir, **Shanti L. Eswaran**, **William D. Chey**

4:54 PM • Translational Symposium 202B

Effects Of Auricular Vagal Nerve Stimulation On Gastrointestinal Motility
Jiande Chen

5:00 PM • Research Forum 103AB

Regulation Of Intraepithelial CD8+ T Cell Interaction With Epithelial MHC-I By Absent In Melanoma 2 In Gastric Pre-Neoplastic Lesions

Mohamad El-Zaatari, Min Zhang, Sho Kitamoto, **Helmut Grasberger**, **Nobuhiko Kamada**, **John Y. Kao**

POSTER SESSIONS • Tuesday

Accuracy And Agreement Of EUS Fine Needle Biopsy (FNB) In Diagnosing The Type And Malignant Component Of Pancreatic Cystic Lesions (PCLS) **Dhiraj K Peddu**, Ankit Mishra, **Thomas Hunold**, **George M Philips**, **Erik-Jan Wamsteker**, **Richard Kwon**, **Allison R Schulman**, **Jiaqi Shi**, **Eileen Carpenter**, **Jorge D. Machicado**

Assessing US Healthcare Disparities In IBS Diagnosis: A National Survey Analysis

Christopher Velasquez Almarino, Jingwen Liu, Carolyn S. Higgins, **William D. Chey**, Lin Chang

Clinical Benefits Of Hepatocellular Carcinoma Surveillance In A Contemporary Cohort Of At-Risk Patients

Darine Daher, Karim Seif El Dahan, Nicole E. Rich, Nabihah Tayob, Vincent Merrill, Daniel Huang, Ju Dong Yang, Anand V. Kulkarni, Fasiha Kanwal, Jorge A. Marrero, **Neehar D. Parikh**, Amit G. Singal

Cost-Drivers Of Healthcare Expenditures In Inflammatory Bowel Disease

Jeffrey Berinstein, **Shrinivas Bishu**, John I. Allen, Gil Melmed, Sameer K Berry

Diagnostic Journey Of Patients With Chronic Idiopathic Constipation In The USA: Analysis From A Cross-Sectional Observational Study

Eric Dinesh Shah, Joanna de Courcy, Jeanne Jiang, Mei Lu, Baha Moshiree, Neil A Reynolds, Teresa Taylor-Whiteley, Brian Terreri, Darren M. Brenner

Effectiveness Of Upadacitinib For Patients With Acute Severe Ulcerative Colitis: A Case-Control Study

Jeffrey Berinstein, Taylor A Karl, Anish Patel, Michael Todd Dolinger, Terrence Barrett, Waseem Ahmed, Benjamin Click, Calen Andrew Steiner, David Dulaney, Jake Levine, Syed Adeel Hassan, Courtney Perry, Deborah Flomenhoft, Ryan C Ungaro, Daniel Aintabi, Elliot Berinstein, **Jessica L Sheehan, Shirley Cohen-Mekelburg, Ryan Stidham, Shrinivas Bishu**, Jean Frederic Colombel, Randolph Regal, **Peter D.R. Higgins**

Efficacy Of Tenapanor In Patients With Irritable Bowel Syndrome With Constipation (IBS-C): A Post Hoc Analysis Of Patients With And Without Prior Use Of Other IBS-C Prescription Medications From The Phase 3T3mpo-1 And 3mpto-2 Studies

Eric Dinesh Shah, Brian E. Lacy, Yang Yang, Susan Edelstein, David P Rosenbaum

EGD Delay In Patients Presenting With Upper Gastrointestinal Bleed At A Community Hospital: A Retrospective Study

Vedika Rajasekaran, **Joyce Kim**, Eunheh Koh, Samah H. Syed, Micaela Alcalá, Paloma B. Alvarez Cordoliani, Gautam Dagur, Raja R. Sappati

Episode Of Care Model Provides A More Accurate Estimate Of Costs For Patients With Ibd Compared To The Traditional Calendar Year Model

Jeffrey Berinstein, Shrinivas Bishu, John I. Allen, Gil Melmed, Sameer K Berry

Erosive Esophagitis Is Associated With High Health Care Resource Utilization And Frequent Changes In Medications

Nicholas J. Shaheen, Dhyanesh A. Patel, Bonnie Bui, Murali Gopal, Rinu Jacob, Benjamin Chastek, Christina Landis, **Eric Dinesh Shah**

Evolution At The US Food And Drug Administration: Scoping Review To Assess Risk Tolerance Of FDA For New Medical Devices And Technology In Gastroenterology

Shan Xue, Megan M Hennessey, Rebecca Z Strigenz, **Eric Dinesh Shah**

Immunotherapy Versus Lenvatinib In Advanced Hepatocellular Carcinoma: A Multicenter, Nationwide Propensity Score Matching Analysis

Wee Han Ng, Yee Hui Yeo, Amit G. Singal, Hyunseok Kim, Yun Wang, Walid S. Ayoub, Hirsh D. Trivedi, Alexander Kuo, Nicole E. Rich, **Neehar D. Parikh**, Zhiyong Guo, Guangming Li, Binwei Duan, Kevin Sheng-Kai Ma, Ju Dong Yang

Is There A Correlation Between Gastrointestinal Symptoms, Weight Loss, And Fecal Elastase-1 Levels Following An Acute Pancreatitis Episode? A Multicenter Prospective Cohort Study

Joseph Bejjani, Stacey Culp, Melica Nikahd, Anna E Phillips, Vikesh Singh, Somashekar G Krishna, Mitchell L Ramsey, **Jorge D. Machicado**, Pedram Paragomi, Samuel Han, Peter Lee, Phil A. Hart, Georgios Papachristou

Long-term Effectiveness And Durability Of SARS-COV-2 Vaccination Among Patients With Inflammatory Bowel Disease

Erica J. Brenner, Kimberly Weaver, Xian Zhang, Arthur Kastl, Jennifer A. Strople, Jeremy Adler, Marla C. Dubinsky, Athos Bousvaros, Runa Watkins, Xiangfeng Dai, Wenli Chen, Raymond K. Cross, **Peter D.R. Higgins**, Ryan C Ungaro, Meenakshi Bewtra, Emanuelle Bellaguarda, Francis A Farraye, Kelly Y. Chun, Michael Zikry, Monique Bastidas, Ann M Firestine, Riley Craig, Margie Bocchieri, Millie Dascomb Long, Michael Kappelman

Magnitude Of SARS-COV-2 Spike Antibody Level Following Vaccination Is Not Associated With Risk Of Developing Symptomatic Covid-19 Among Patients With Inflammatory Bowel Disease

Erica J. Brenner, Kimberly Weaver, Xian Zhang, Arthur Kastl, Jennifer A. Strople, Jeremy Adler, Marla C. Dubinsky, Athos Bousvaros, Runa Watkins, Xiangfeng Dai, Wenli Chen, Raymond K. Cross, **Peter D.R. Higgins**, Ryan C Ungaro, Meenakshi Bewtra, Emanuelle Bellaguarda, Francis A Farraye, Kelly Y. Chun, Michael Zikry, Monique Bastidas, Ann M Firestine, Riley Craig, Margie Bocchieri, Millie Dascomb Long, Michael Kappelman

Most Screening Colonoscopy Patients Have Out-Of-Pocket Costs For Colon Preps Contrary To The ACA Mandate: A Real-World Analysis From A Large Dataset

Eric Dinesh Shah, Audrey H. Calderwood, tin, Joshua J Levy

Multi Center Validation Of Video-Based Deep Learning To Interpret Anorectla Manometry

Zarif Azher, Brian D Ginnebaugh, David Justin Levinthal, Nelson Valentin, Joshua J Levy, **Eric Dinesh Shah**

Multicenter Comparison Of Abbreviated MRI Versus Ultrasound For Detecting Early-Stage Hepatocellular Carcinoma In Patients With Cirrhosis

Karim Seif El Dahan, Takeshi Yokoo, Mishal Mendiratta-Lala, David T. Fetzer, Matthew S. Davenport, Darine Daher, Nicole E. Rich, Edward Yang, **Neehar D. Parikh**, Amit G. Singal

Preventive Effects Of Electrical Stimulation At ST36 On Water Avoidance Stress-induced Visceral Hyperalgesia And Intestinal Barrier Function In Rats

Tingting Zhao, **John W Wiley, Jiande Chen**

Proteomic Signatures For Fecal Urgency And Disease Clearance In Patients With Ulcerative Colitis In The SPARC IBD Cohort

Shivani Shah Mattay, SIYAN CAO, Krithika Shenoy, Jiannan Li, **Shrinivas Bishu**, James D. Lewis, Raymond K. Cross, Themistocles Dassopoulos, Matthew A Ciorba, Xiuli Liu, Jinsheng Yu, Parakkal Deepak

Quiescent Crohn's Disease Patients With Persistent Symptoms Show Enrichment Of Sulfur Metabolites And Sulfur Metabolic Pathways

Allen Lee, Jonathan Golob, Jeffrey Berinstein, William Chey, Chung Owyang, **Nobuhiko Kamada, Peter D.R. Higgins, Vincent Bensen Young, Krishna Rao, Shrinivas Bishu**

TUESDAY MAY 21 (cont'd)

Real-World Effectiveness And Safety Of Ozanimod In Ulcerative Colitis: A Multicenter Study

Stephen Lieto, Nicholas Scalzo, Katherine Huang, Abdul Khan, Anthony Xu, Joel Pekow, Palak Rajauria, Malek Ayoub, Amanda M Johnson, Andres Yarur, Anish Patel, **Shrinivas Bishu**, Richa Shukla, Mark T. Osterman, Damemarie Paul, Uyen Sokol, Soba Tharmarajah, Garrett Lawlor, Harris Ahmad, David T. Rubin, Bruce E. Sands, da M Johnson, Parakkal Deepak

Real-World Effectiveness And Safety Of Upadacitinib In Crohn's Disease: A Multicenter Study

Jalpa Devi, NAVREET MALHI CHOWLA, Abdul Khan, Katherine Huang, Nikhil Reddy, Joel Pekow, Anish Patel, **Shrinivas Bishu**, Richa Shukla, Marc Fenster, Ryan C Ungaro, Andres Yarur, Amanda M Johnson, Parakkal Deepak

Reproducibility Of The Rectal Sensory Function Assessment With Repetitive Rectal Balloon Distensions In Patients With Irritable Bowel Syndrome (IBS)

Shiyuan Gong, Muhammad Khawar Ali, **Jiande Chen**, Colin Burnett, Lydia Watts, Jieyun Yin, **Borko Nojkov**

Risk Of Hepatocellular Carcinoma Amongst Subcentimeter Nodules On Surveillance Ultrasound: A Systematic Review

Eden Koo, Karim Seif El Dahan, Darine Daher, **Neehar D. Parikh**, Amit G. Singal

HONORABLE MENTION

VIDEO: Endoscopic Ultrasound (EUS)-Guided Coil Embolization Of A Refractory Pseudoaneurysm

Ravi Kankotia, **Abhishek Satishchandran**, Shantanu Warholpolde, **Allison R Schulman**

VIDEO: EUS-Guided Coloduodenostomy For Management Of Afferent Limb Syndrome-Induced Pancreatitis In A Patient With Donor Duodenojejunostomy

Abhishek Satishchandran, Seth Waits, Meredith Barrett, **Allison R Schulman**



Above: 2023 UMCGR/GI Division Research Retreat



Above: Chief, Bill Chey & 2023-2024 GI Fellows



Above: GI/Hep Fellows Debate



Index

Faculty

	Page
ADAMS, Megan A.....	4, 12
BERINSTEIN, Jeffrey.....	2, 12, 13, 14, 17, 18
BISHU, Shrinivas.....	12, 14, 16, 17, 18, 19
CARPENTER, Eileen.....	5, 12, 16, 17
CHANG, JoyW.....	2, 12, 13
CHEN, JiandeDZ.....	13, 14, 15, 16, 17, 18, 19
CHEN, Joan.....	12, 13, 14
CHEN, Vincent.....	7, 12, 14, 15, 16
CHEY, William D.....	1, 3, 4, 8, 9, 10, 12, 13, 14, 15, 17, 18
COHEN-MEKELBURG, Shirley.....	2, 12, 13, 15, 16, 18
CUSHING-DAMM, Kelly.....	15, 16
DIMAGNO, Matthew.....	13
FONTANA, Robert.....	14, 16
ESWARAN, Shanti.....	8, 9, 10, 12, 14, 16, 17
GUIVATCHIAN, Tannaz.....	13
HIGGINS, Peter DR.....	12, 13, 15, 16, 18
KAMADA, Nobuhiko.....	17, 18
KAO, John Y.....	12, 17
KURLANDER, Jacob E.....	14
KWON, Richard.....	12, 13, 14, 15, 16, 17
LEE, Allen.....	18
LOK, Anna.....	3, 4
MACHICADO, Jorge.....	2, 6, 12, 13, 14, 15, 16, 17, 18
MELLINGER, Jessica.....	2, 12, 16
MENEES, Stacy.....	16
NAFTALY, Jessica.....	15
NEWMAN, Kira.....	2, 12, 13, 15, 16
NOJKOV, Borko.....	13, 19
PARIKH, Neehar.....	15, 17, 18, 19
PERUMALSWAMI, Ponni.....	14
PHILIPS, George M.....	12, 13, 15, 16, 17
RAZUMILAVA, Nataliya.....	2, 3, 13
READ, Andrew.....	2
RIEHL, Megan.....	12
RIFKIN, Samara.....	7, 17
RUBENSTEIN, Joel H.....	3, 13, 14, 15, 16, 17
SAINI, Sameer Dev.....	14
SCHULMAN, Allison R.....	3, 11, 12, 13, 14, 15, 16, 17, 19
SHAH, Eric.....	12, 14, 15, 16, 17, 18
SHARMA, Pratima.....	15
SINGH, Prashant.....	2, 8, 9, 12, 13, 14, 15, 16, 17
SPELIOTES, Elizabeth.....	15, 16
STIDHAM, Ryan.....	12, 18
STOFFEL, Elena M.....	3, 13, 14, 15, 16, 17
SU, Grace.....	3, 4, 7, 16, 17

Faculty

	Page
TAPPER, Elliot B.....	4, 13, 14, 16
TODISCO, Andrea.....	15
TURGEON, Kim.....	16
WALJEE, Akbar K.....	13, 16
WAMSTEKER, Erik-Jan.....	12, 13, 15, 16, 17
WANG, Tom.....	15, 17
WILEY, John.....	14, 16, 18

Fellows

	Page
DEAN, Gregory.....	8, 9, 12, 17
GIBBS, Jeffrey.....	16
HAWA, Fadi.....	13, 16
HUNOLD, Thomas.....	13, 17
KIM, Joyce.....	18
SATISHCHANDRAN, Abhishek.....	19
SHEEHAN, Jessica.....	13, 15, 18
SHENOY, Abhishek.....	16
TAKAKURA, Will.....	12
UTTAL, Sarah.....	16