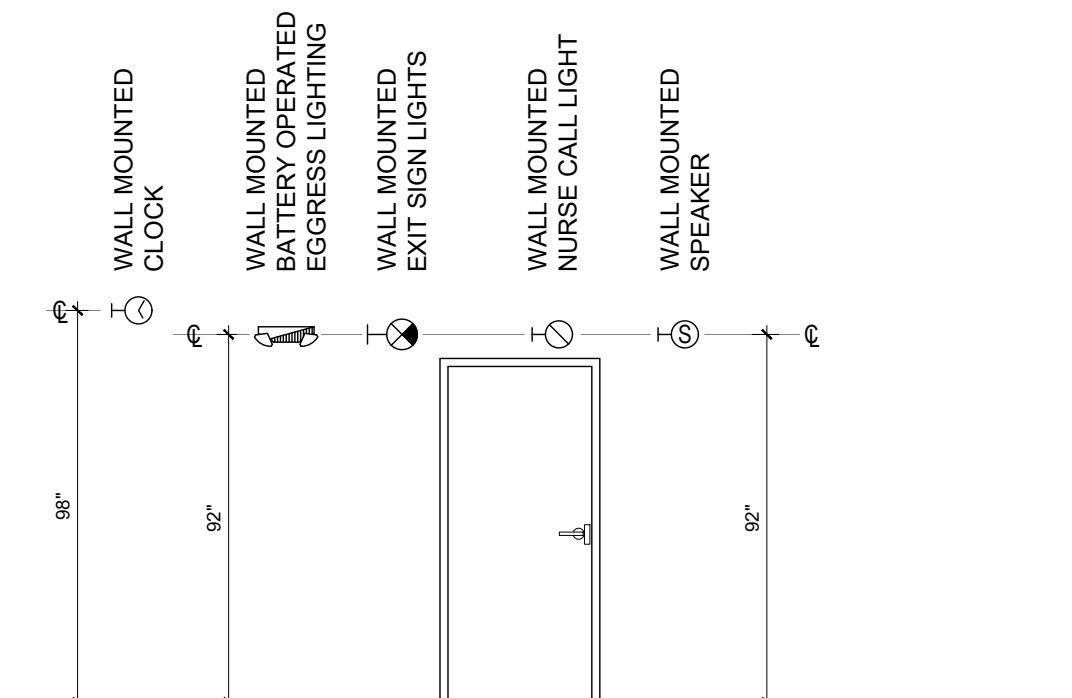
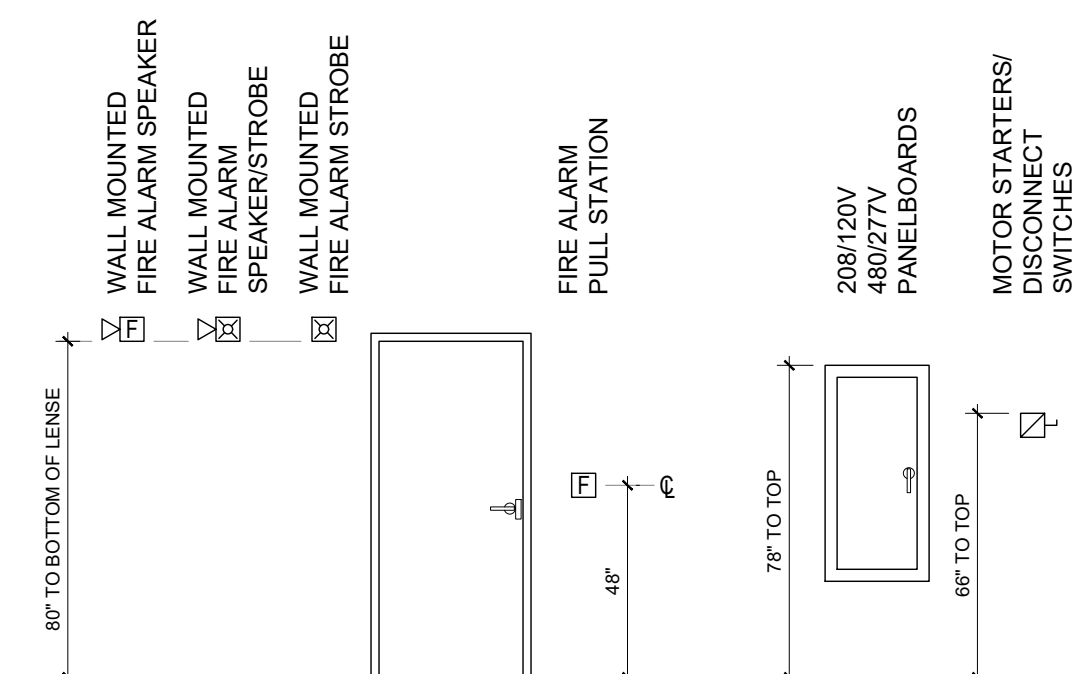
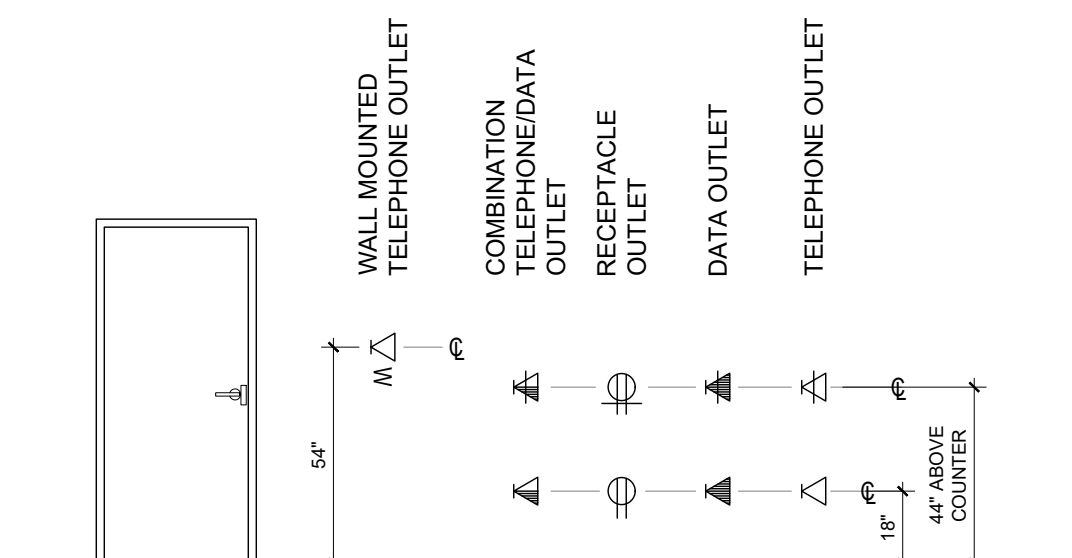
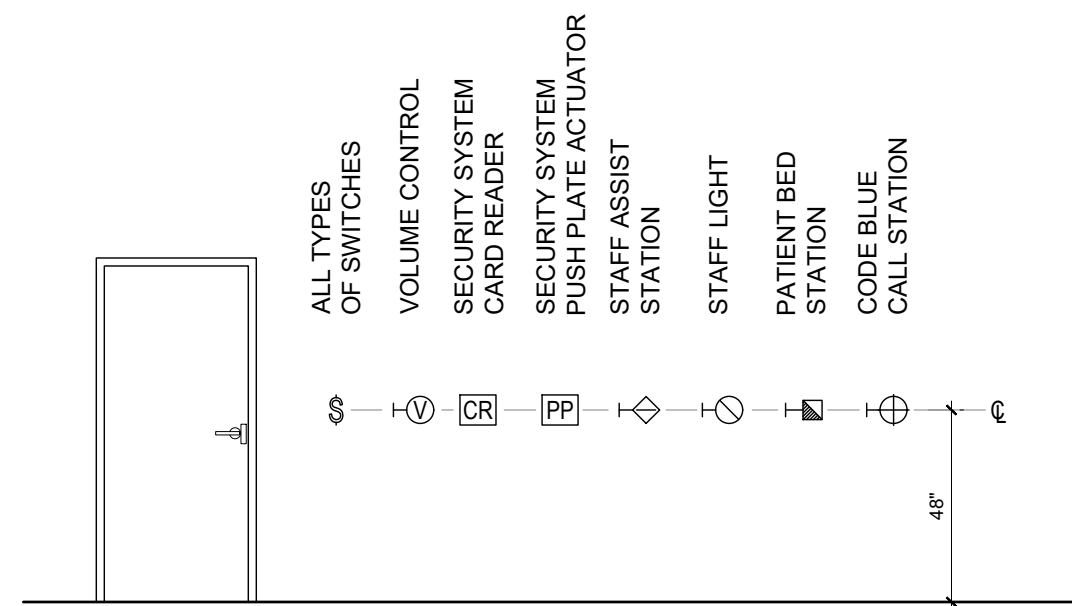


MOUNTING HEIGHTS

- MOUNTING HEIGHTS ARE TYPICAL UNLESS NOTED OTHERWISE ON PLANS.
- FOR CEILING HEIGHTS BELOW 8'-6" REFER TO DRAWINGS FOR CLOCKS, SPEAKERS, EXIT LIGHTS & EGRESS LIGHTS FOR APPROPRIATE MOUNTING HEIGHT.



ABBREVIATIONS LIST

A.	AMPERES
AC	ARMORED CABLE / ALTERNATING CURRENT
AFF	ABOVE FINISHED FLOOR
AFG	ABOVE FINISHED GRADE
AIC	AMPERE INTERRUPTING CAPACITY
ATS	AUTOMATIC TRANSFER SWITCH
AWG	AMERICAN WIRE GAUGE
AL	ALUMINUM
APPR	APPROXIMATELY
BCG	BARE COPPER GROUND
BRKR	BREAKER
C	CONDUIT
CCTV	CLOSED CIRCUIT TELEVISION
CKT	CIRCUIT
CU	COPPER
DC	DIRECT CURRENT
DISC	DISCONNECT
E	EXISTING
EMT	ELECTRICAL METALLIC TUBING
EPO	EMERGENCY POWER OFF
EQ	EQUAL
FLEX	FLEXIBLE
FLUOR	FLUORESCENT
GFI	GROUND FAULT INTERRUPTER
G/GRD	GROUND
HMI	HUMAN MACHINE INTERFACE
ID	INSIDE DIAMETER
IMC	INTERMEDIATE METAL CONDUIT
INSUL	INSULATED OR INSULATION
ISOL	ISOLATION OF ISOLATED
JB	JUNCTION BOX
KCMIL	THOUSAND CIRCULAR MILS
LP	LIGHTING PANEL
LV	LOW VOLTAGE
mA	MILLIAMPERES
MAX	MAXIMUM
MCB	MAIN CIRCUIT BREAKER
MCC	MOTOR CONTROL CENTER
MDP	MAIN DISTRIBUTION PANEL
MFR	MANUFACTURER
MIN	MINIMUM
MON	MONITOR
NAC	NOTIFICATION APPLIANCE CIRCUIT
NEC	NATIONAL ELECTRIC CODE
NIC	NOT IN CONTRACT
N	NEUTRAL
NOM	NOMINAL
NO	NORMALLY OPEN
NC	NORMALLY CLOSED
OC	OVER COUNTER
OD	OUTSIDE DIAMETER
P	POLE
PC	PHOTO CELL/PERSONAL COMPUTER
PNL	PANEL
PVC	POLYVINYL CHLORIDE-SCHEDULE 40, UNO
RECEP	RECEPTACLE
REQD	REQUIRED
RGS	RIGID GALVANIZED STEEL
RP	RECEPTACLE PANEL
SW	SWITCH
TC	TIME CLOCK
TYP	TYPICAL
UNO	UNLESS NOTED OTHERWISE
V	VOLTS
VAC	VOLTS - ALTERNATING CURRENT
VDC	VOLTS - DIRECT CURRENT
VFD	VARIABLE FREQUENCY DRIVE
W	WIRE
WP	WEATHER PROOF
XP	EXPLOSION PROOF

FIRE ALARM LEGEND

FAAP	FIRE ALARM ANNUNCIATOR PANEL
FACP	FIRE ALARM CONTROL PANEL
MFACP	MASTER FIRE ALARM CONTROL PANEL
F	FIRE ALARM PULL STATION
FA / (H)(S)	FA STROBE WITH HORN/SPEAKER WALL/CEILING
FA / (S)	FA STROBE WALL/CEILING
FA / (H)(F)	FA HORN/SPEAKER WALL/CEILING
NAC	NOTIFICATION APPLIANCE CIRCUIT PANEL
H	HEAT DETECTOR
S	SMOKE DETECTOR CEILING/DUCT
H	DOOR HOLDER

SECURITY SYSTEMS LEGEND

AUTO	AUTO OPERATOR
CR	CARD READER
DL	DOOR LOOP
DM	DOOR MONITORING CONTACT
EHI	ELECTRIFIED DOOR HARDWARE
HIN	ELECTRIFIED HINGE
ES	ELECTRIC STRIKE
PP	PUSH PLATE
R	RELAY
RTE	REQUEST TO EXIT
AP	SECURITY ACCESS PANEL
CCTV	SECURITY CAMERA

COMMUNICATION LEGEND

DATA JACK WALL/ABOVE COUNTER
COMBO PHONE/DATA JACK WALL/ABOVE COUNTER
PHONE JACK WALL/ABOVE COUNTER
DATA JACK FLOOR/CEILING
COMBO PHONE/DATA JACK FLOOR/CEILING
PHONE JACK FLOOR/CEILING
CABLE TV OUTLET
NURSE CALL ANNUNCIATOR PANEL
NURSE CALL CONTROL PANEL
NURSE STAFF ASSIST STATION
NURSE CALL LIGHT
PATIENT BED STATION
CODE BLUE CALL STATION
CLOCK
SPEAKER CEILING/WALL
VOLUME CONTROL
CABLE TRAY
VERTICAL RACEWAY
HORIZONTAL RACEWAY

POWER LEGEND

120/208V POWER PANELBOARD
277/480V LIGHTING PANELBOARD
DISTRIBUTION PANEL
DUPLEX RECEPTACLE
DUPLEX RECEPTACLE ABOVE COUNTER
DUPLEX RECEPTACLE EMERGENCY POWER
DUPLEX GFI RECEPTACLE
DUPLEX RECEPTACLE FLOOR/CEILING
QUADPLEX RECEPTACLE
QUADPLEX RECEPTACLE ABOVE COUNTER
QUADPLEX RECEPTACLE EMERGENCY POWER
QUADPLEX GFI RECEPTACLE
QUADPLEX RECEPTACLE FLOOR/CEILING
SINGLE RECEPTACLE
208V RECEPTACLE, 3 PHASE
LOCKING RECEPTACLE
LOCKING RECEPTACLE EMERGENCY POWER
WEATHER PROOF RECEPTACLE
ISOLATED GROUND RECEPTACLE
JUNCTION BOX
PULL BOX
ELECTRICAL METER
SUBSTATION
FUSED DISCONNECT SWITCH
NON-FUSED DISCONNECT SWITCH
COMBINATION STARTER W/ DISCONNECT
MOTOR STARTER
EPO PUSH BUTTON
POWER POLE
CONDUIT END UP/DOWN
MOTOR SINGLE/THREE PHASE
BUS DUCT
CONTINUATION SYMBOL

LIGHTING LEGEND

SWITCH SINGLE/DUAL LEVEL LIGHTING
2 POLE SWITCH
3-WAY SWITCH
4-WAY SWITCH
DIMMER SWITCH
KEY SWITCH
OCCUPANCY SENSOR SWITCH
OCCUPANCY SENSOR CEILING/WALL
LAY-IN LIGHT FIXTURE
LAY-IN NIGHT (EMERGENCY) LIGHT FIXTURE
INCANDESCENT LIGHT FIXTURE
FLUOR WALL MOUNTED LIGHT FIXTURE
FLUOR STRIP LIGHT FIXTURE
FLUOR WALL MOUNTED STRIP LIGHT FIXTURE
WALL MOUNTED SCNCE
SUSPENDED TRACK
EMERGENCY LIGHT FIXTURE
EXIT SIGN CEILING/WALL
XRAY VIEWBOX

DEMOLITION GENERAL NOTES

- COORDINATE DEMOLITION SCHEDULE AND EXTENT WITH PROJECT COORDINATOR PRIOR TO STARTING WORK.
- WIRING THAT COMPLIES WITH UMHS STANDARDS AND FINAL DESIGN REQUIREMENTS MAY BE REUSED. CONDUIT AND WIRE REMOVED MAY NOT BE REINSTALLED. CONDUIT AND WIRE NOT REUSED SHALL BE REMOVED BACK TO ASSOCIATED PANELBOARD OR TO J-BOX AT WHICH THE CIRCUIT IS TO REMAIN ACTIVE.
- MCIT SHALL BE RESPONSIBLE FOR DISCONNECTION OF TELE/DATA CABLES FROM WORK STATIONS AND OFFICES. REMOVE TELEPHONE AND DATA CABLES AS DIRECTED BY MCIT. A PORTION OF THE TELE/DATA CABLES MAY BE REUSED FOR NEW WORK STATIONS.

GENERAL NOTES

- ALL WORK, EQUIPMENT, WIRING DEVICES AND WIRING SHALL COMPLY WITH UMHS DESIGN GUIDELINES, STANDARDS AND SPECIFICATIONS.
- COORDINATE NEW WORK SCHEDULE AND EXTENT WITH PROJECT COORDINATOR PRIOR TO STARTING WORK.
- ALL WIRING SHALL BE 2#12 & 1#12GND-3/4" UNLESS NOTED OTHERWISE. 120 VOLT CIRCUITS SHALL HAVE DEDICATED NEUTRALS. CIRCUITS MAY BE GROUPED WITH A MAXIMUM OF SIX (6) CURRENT CARRYING CONDUCTORS (NEUTRALS SHALL BE CONSIDERED CURRENT CARRYING). FOR NEW 120 VOLT, 20 AMP CIRCUITS LONGER THAN 150 FEET #10 AWG CONDUCTORS SHALL BE INSTALLED.
- EXISTING BRANCH CIRCUIT WIRING COMPLYING WITH DESIGN PARAMETERS MAY BE REWORKED FOR NEW WORK. EXISTING WIRING SHALL BE INSPECTED AND TESTED FOR DAMAGE, NEW WIRING SHALL BE USED TO EXTEND EXISTING CIRCUITS TO NEW LOCATIONS.
- WIRING OF EXISTING BRANCH CIRCUITS REUSED SHALL BE TESTED FOR PROPER GROUND, PHASE AND NEUTRAL CONNECTIONS. PROJECT COORDINATOR SHALL BE NOTIFIED OF ANY CIRCUITS THAT DO NOT TEST PROPERLY.
- FIELD VERIFY PANELBOARD SCHEDULE INFORMATION. EXISTING CIRCUIT NUMBERS AND ASSOCIATED LOADS HAVE BEEN DETERMINED BY INFORMATION OBTAINED FROM PANELBOARD DIRECTORIES.
- PROVIDE NEW CIRCUIT BREAKERS IN EXISTING PANELBOARD AS REQUIRED. UNLESS NOTED OTHERWISE, BREAKERS SHALL BE RATED 20 AMP, 1 POLE, 22KAIC. EXISTING REUSED CIRCUIT BREAKERS SHALL BE RATED 20 AMP WITH MINIMUM #12 AWG BRANCH CIRCUIT WIRING. VERIFY CIRCUIT BREAKER RATINGS AND TEST FOR PROPER OPERATION. PROJECT COORDINATOR SHALL BE NOTIFIED OF ANY CIRCUIT BREAKERS THAT DO NOT TEST PROPERLY.
- PANELBOARD DIRECTORIES SHALL BE UPDATED AT COMPLETION OF PROJECT.
- SEAL PENETRATIONS THROUGH WALLS AND FLOORS TO RESTORE ORIGINAL FIRE RATING. USE A UL LISTED FIRE SEALANT. PENETRATIONS SHALL BE INSPECTED BY AUTHORITY HAVING JURISDICTION AFTER INSTALLATION OF FIRE SEAL MATERIAL.
- THIS DRAWING REPRESENTS TYPICALLY ENCOUNTERED ITEMS. NOT ALL ITEMS SHOWN MAY OCCUR WITHIN THE SCOPE OF THIS PROJECT. REFER TO COMPLETE SPECIFICATIONS AND DRAWING DOCUMENTATION SET.

REFERENCE SYMBOLS LEGEND

PLAN IDENTIFICATION W/ NORTH ARROW
DETAIL IDENTIFICATION
SECTION LOCATION IDENTIFICATION
DETAIL LOCATION IDENTIFICATION AT ENLARGED SCALE
ELEVATION LOCATION IDENTIFICATION
KEYNOTE IDENTIFICATION DEMO / NEW / MISC
BULLETIN IDENTIFICATION WITH REVISION CLOUD
ROOM NAME & NUMBER
GRID BUBBLE



2101 Commonwealth, Suite B
Ann Arbor, Michigan 48105-5759
www.med.umich.edu/facilities/plan/

File Name/Archive No.
2/1/17 mcintyre, thomas
t:\fpd_shared\planning-standards\cad\prototypes

TERMS & CONDITIONS FOR DOCUMENT USE

PROPERTY OF THE UNIVERSITY OF MICHIGAN
SUBJECT TO RESTRICTIONS

These plans have been provided to you for the limited purpose of bidding and/or providing construction work at the University of Michigan. You acknowledge that these plans are the confidential property of the University of Michigan. You will keep the plans confidential and will not discuss with or provide these plans to any third party, other than those employees, subcontractors, or consultants who are essential to completing your bid and/or work. Unless your company is selected to perform a part of the work, you will destroy all copies of the plans within 90 days of the bid due date.

CD's Issued To:

BFS: _____ HFES: _____

BFS Shop Drawing Submission Req'd:

FA: _____ SUPP: _____

Project Delivery Method: _____

UM Design Manager:

Designed: _____ A. Martinez

Drawn: _____ A. Martinez

Coordination Checked:

Checked: _____ A. Desmarais

Approved: _____ B. Harris

Location: _____

Keyword: _____ Legend

Project
STANDARD

Sheet Title
ELECTRICAL LEGEND,
GENERAL NOTES,
ELEVATIONS &
ABBREVIATIONS

Project Number

Sheet Number