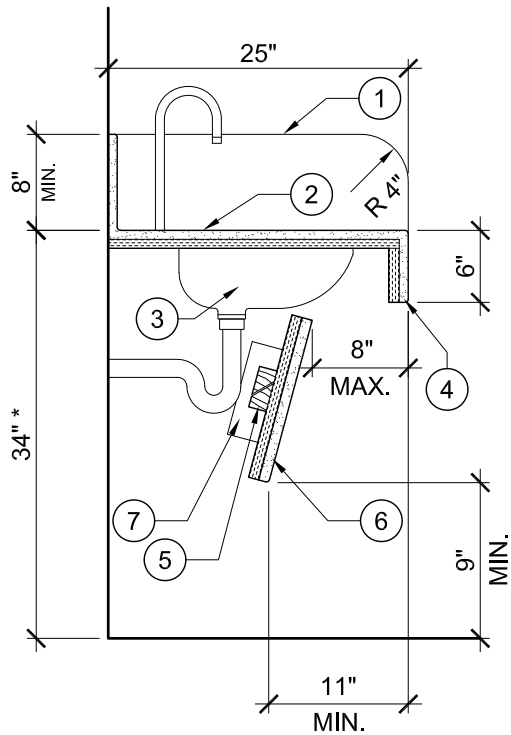
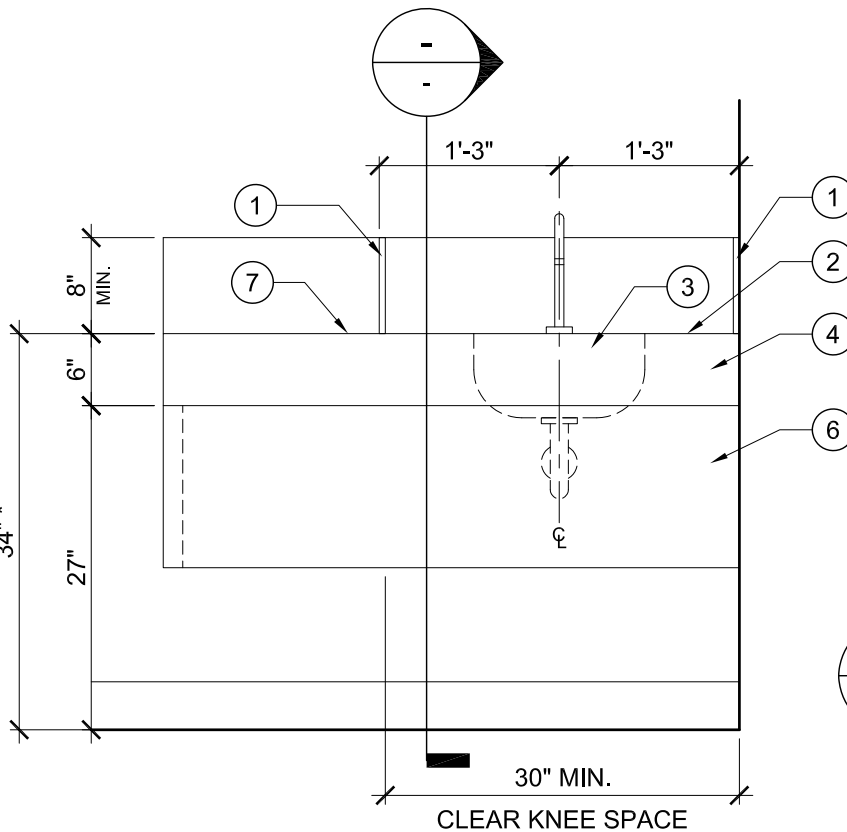


* 36" PERMITTED AT EMPLOYEE WORK AREA



- ① 1/2" THICK SOLID SURFACE SPLASH GUARD (WHEN DRY WORK COUNTER IS ADJACENT.)
- ② 1/2" MIN. THICK SOLID SURFACE COUNTERTOP ON WATER RESISTANT BACKER BOARD WITH INTEGRAL COVED BACKSPASH .
- ③ SOLID SURFACE SINK WITHOUT OVERFLOW DRAIN, REFER TO DESIGN GUIDELINES FOR INFORMATION ON SINK AND HARDWARE.
- ④ 1/2" SOLID SURFACE APRON ON WATER RESISTANT BACKER BOARD.
- ⑤ SOLID WOOD "FRENCH CLEAT" WITH WALL BLOCKING BEHIND GYP BOARD AT EACH END.
- ⑥ 1/2" THICK SOLID SURFACE ON WATER RESISTANT BACKER BOARD - SCREW INTO WOOD BLOCKING AT BOTH ENDS.
- ⑦ DRY WORK COUNTER
- ⑧ DO NOT PROVIDE BASE CABINET UNDER SINK

* 36" PERMITTED AT EMPLOYEE WORK AREA



2101 Commonwealth, Suite B
 Ann Arbor, MI 48105
 FAX: (734) 763-0417
www.med.umich.edu/facilities/plan
 FILE: D064040H-5.dwg
 ISSUE: December 2017

SINK COUNTER
 ELEVATION & SECTION