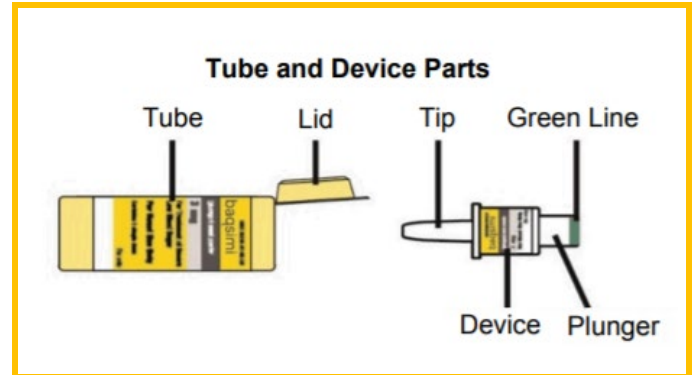


Baqsimi[®] (Glucagon) 3mg Nasal Powder

Important Information

- Do **not** remove the shrink wrap or open the tube until you are ready to use it.
- Store Baqsimi in the shrink-wrapped tube at room temperature.
- Do **not** push the plunger or test Baqsimi before you are ready to use it.
- Baqsimi contains 1 dose of glucagon nasal powder and **cannot** be reused.
- Baqsimi is for nasal (nose) use only.
- Baqsimi will work even if you have a cold or are taking cold medicine.

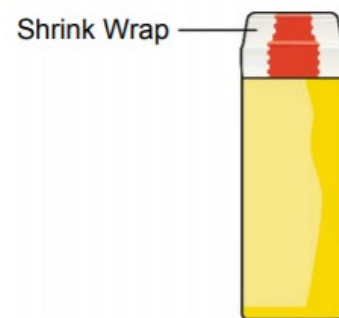


How do I prepare the dose?

1. Regularly check expiration date printed on the tube.
 Replace Baqsimi prior to the expiration date and do **not** use if past expiration date.

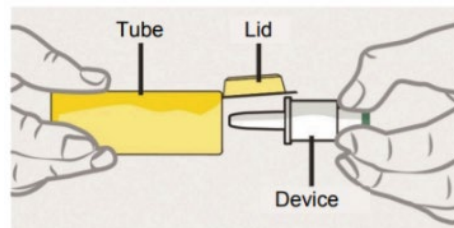


2. Remove the shrink wrap by pulling on red stripe.



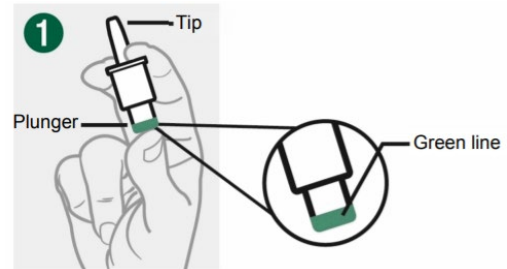
3. Open the lid and remove the device from the tube.

Caution: do **not** press the plunger until ready to use the device

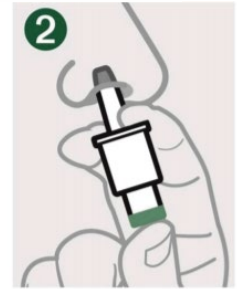


How do I give the dose?

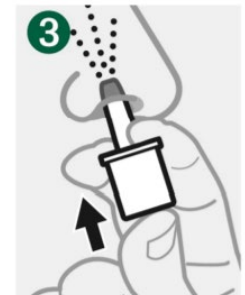
4. Hold device between fingers and thumb.
Do **not** push plunger yet.



5. Insert tip gently into one nostril until your fingers touch the outside of the nose.



6. Push plunger firmly all the way in.
Dose is complete when the green line disappears.



What should I do after giving Baqsimi?

7. Call for emergency help right away.
8. If the person is unconscious, turn the person on their side.
9. Throw away the used device and tube.
10. If the person does not respond after 15 minutes, another dose may be given, if available.

Images ©Lilly USA, LLC 2019. All rights reserved. Adapted from: <http://pi.lilly.com/us/baqsimi-us-ifu.pdf>. To learn more visit: <http://baqsimi.com>

Disclaimer: This document contains information and/or instructional materials developed by Michigan Medicine for the typical patient with your condition. It may include links to online content that was not created by Michigan Medicine and for which Michigan Medicine does not assume responsibility. It does not replace medical advice from your health care provider because your experience may differ from that of the typical patient. Talk to your health care provider if you have any questions about this document, your condition or your treatment plan.

Patient Education by [Michigan Medicine](#) is licensed under a [Creative Commons Attribution-NonCommercial-ShareAlike 4.0 International Public License](#). Last Revised 09/2019