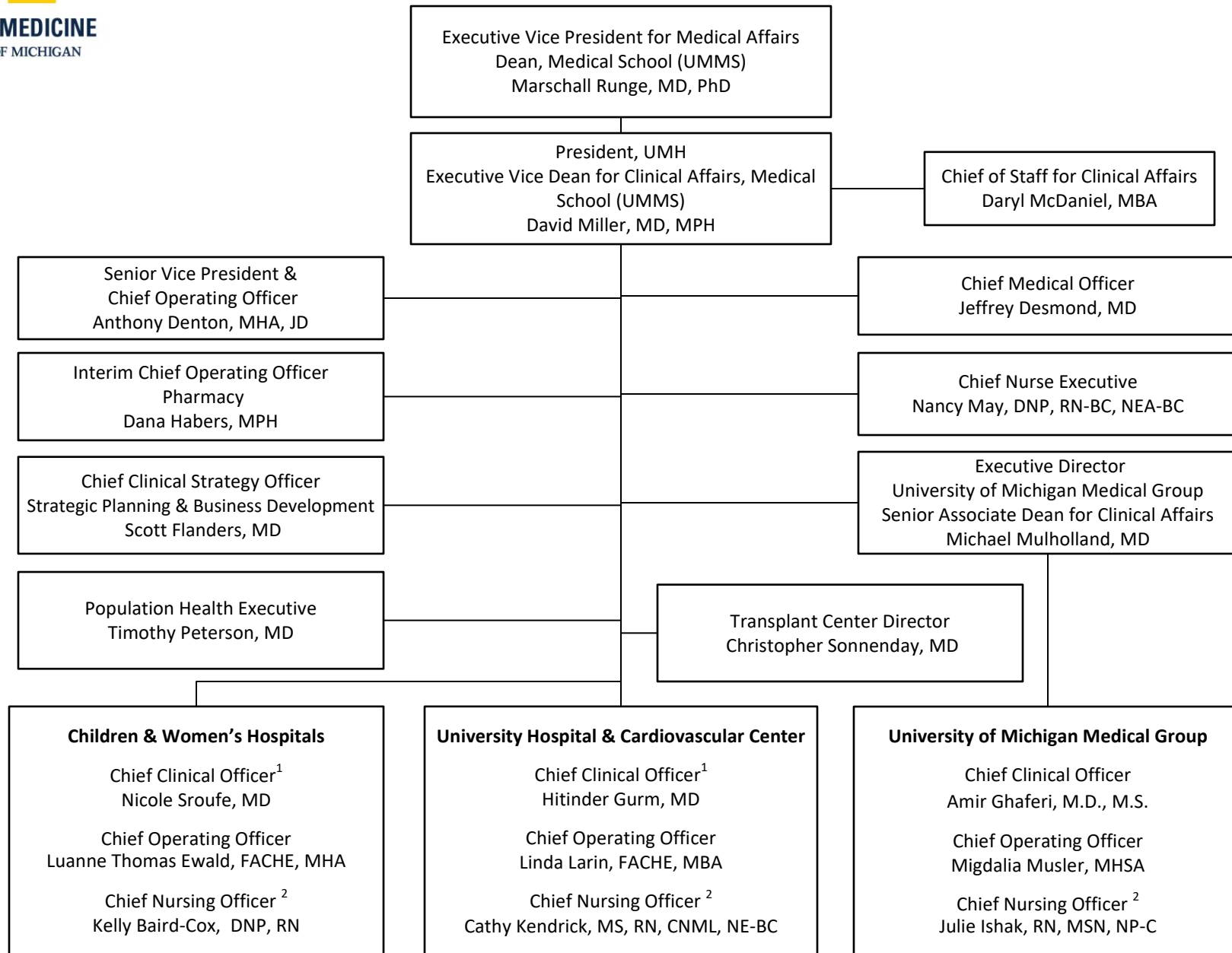




**MICHIGAN MEDICINE
UNIVERSITY OF MICHIGAN HEALTH (UMH)
PRESIDENT**



1. Chief Clinical Officer (CCO) has dual reporting to the President of UMH & Executive Vice Dean for Clinical Affairs and the System Chief Medical Officer (CMO)
 2. Chief Nursing Officer (CNO) has dual reporting to Chief Nurse Executive (CNE) and to the President of UMH & Executive Vice Dean for Clinical Affairs