

3D SURFACE SCANNING TECHNOLOGY

Precise face mask fittings are crucial for well-being of the patient. The traditional method of modeling designs out of plaster of Paris method is often expensive, time-consuming and inaccurate. Utilizing 3D surface imaging technology clinicians can accurately capture skull shape, facial features, facial size and shape. These images can be exported to computer aided design and manufacturing protocols to make a physical model.

Applications:

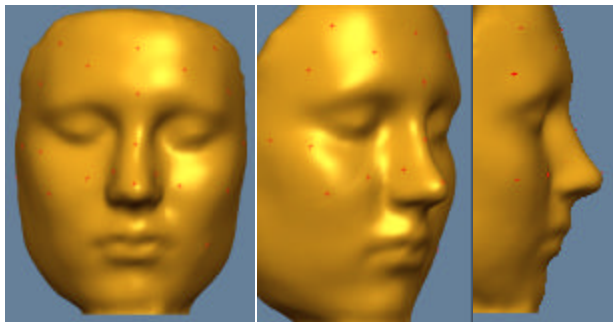
Custom face masks for burn patients
Face masks for sports injury cases
Cranial reshaping helmets



3D Scanner



Applying target reflectors



Scanned model views



Finished face mask

**Refer Patients To: Ammanath Peethambaran, CO, MS,
Send a Prescription (Fax to 734-975-4726)**