



University of Michigan
Medical School

THE MICHIGAN DIFFERENCE

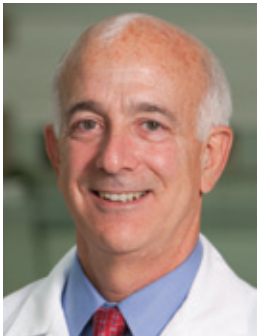
Department of Neurology
1500 E. Medical Center Drive
1914 Taubman Center SPC 5316
Ann Arbor, MI 48109-5316
734-763-6184
www.med.umich.edu/neurology



UNIVERSITY OF MICHIGAN DEPARTMENT OF NEUROLOGY

WINTER 2011

A MESSAGE FROM THE CHAIR



David J. Fink, MD, Robert Brear Professor and Chair

Dear Neurology Alumni and Friends,

This summer, the Kresge Research Building complex (Kresge Buildings I, II and III) at the corner of Ann Street and Zina Pitcher Place was torn down, providing the view of the medical complex from the southwest shown in the picture below.

Watching the buildings come down made me think about change, and as we enter the second decade of the 21st century, the changes that have taken place in our department.

In 2003 the University of Michigan Department of Neurology saw 16,000 outpatient visits, bench research was conducted in 5,000 square feet of laboratory space (coincidentally located in swing space in the recently torn down Kresge III), and total NIH-funded research support for the year was slightly less than \$5 million.

In the year just completed, we saw 28,000 outpatient visits, bench research was conducted in 17,000 square feet of laboratory space in the Biomedical Sciences Research Building, and NIH research funding to the department was over \$13 million, with more than \$2 million in research grants from the Department of Veterans Affairs.

Of the 45 faculty members currently appointed in the department, 25 are new to the department since 2004! In this year's newsletter we focus on a few of our new faculty: Bill Stacey and Simon Glynn in EEG, Anita Shelgikar and Neeraj Kaplish in Sleep Medicine, and Peter Todd in neurodegenerative disease.

I hope to see you at our annual reunion at the American Academy of Neurology (AAN) meeting, April 12th, in Honolulu!

Sincerely,

David J. Fink, MD
Robert Brear Professor and Chair



Kresge Park Photo by Scott Soderberg

Peter Todd, MD, PhD Installed as the Bucky and Patti Harris Professor



Dr. Peter Todd and Patti Harris

In January, we inaugurated the Bucky and Patti Harris Career Development Professorship with the installation of Peter Todd, MD, PhD, assistant professor of neurology, as the first Harris Professor.

Dr. Todd received his MD and PhD degrees from the University of Wisconsin, and after completing a residency in Neurology at the University of Pennsylvania, joined the laboratory of Dr. Henry Paulson supported by an AAN Clinical Research Fellowship. He was promoted to assistant professor in January, 2010. Last April, Peter received the 2011 AAN S. Weir Mitchell Award, an award given annually to the most promising young physician-scientist in the Academy, and he competed successfully for a K08 Mentored Clinical Scientist Research Career Development Award from the National Institutes of Neurological Disorders and Stroke, awarded to him in July.

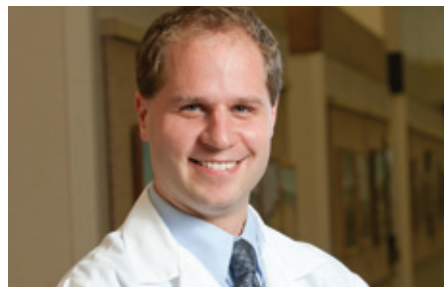
Peter's research is focused on the very new area of RNA and RNA processing mechanisms in neurodegenerative disease. Since being promoted to assistant professor, he has authored an invited review article on RNA-mediated neurodegeneration in *Annals of Neurology*, has had a first-author research paper in *PLoS Genetics*, and was invited to chair a session on novel disease mechanisms in genetic disorders at the meeting of the Movement Disorders Society.

The Harris Professorship is a result of a generous donation from Patti Bugas Harris to further Alzheimer's disease research and to honor the memory of her long and happy marriage to Charles "Bucky" Harris, who died of the disease in 1997. Mr. Harris was treated by Sid Gilman, MD, who has been a long-time friend and supporter of Patti in her fight against Alzheimer's disease.

Mr. Harris was for many years the head of a family business, Harris-McBurney Services, in Jackson, MI, which had, under his guidance, grown into a successful telecommunications business specializing in fiber-optics technology. Upon his death, Mrs. Harris became the President and CEO of the company. The Harrises loved ranching and farming, and raised their two children, Mark and Sage, in Michigan and Montana.

As a career development professorship, the Harris Professorship is awarded for a five-year period to support the work of a promising young clinician-investigator early in his or her career.

Zach London, MD Develops "Nerve Whiz"



Dr. Zach London

In appreciation for the care they receive from Dr. Zachary London, Jerry Isler and his wife Gussie established the Jerry Isler Neuromuscular Fund (JINF) in Neurology to support neuromuscular disease education and research. The Isler Fund has become a passion for Jerry and Gussie, and they are very enthusiastic about the

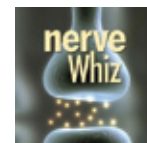
work of Dr. London and the Neuromuscular Program. The first tangible product of the JINF is Nerve Whiz, a free iPhone app that was conceived of and developed by Zach.

The app is a 21st century update of the *Queen's Square* manual that many of us used (or still use) for localizing peripheral nerve lesions. Nerve Whiz prompts the clinician to enter muscles that are weak, or areas of sensory loss on a picture of a limb. The app generates a differential diagnosis of peripheral nerve localizations in order of likelihood, and provides diagrams of the lesions and descriptions of their distinguishing clinical features. Over 25,000 iPhone and iPad users worldwide have already downloaded Nerve Whiz, and an Android version is in development.



Gussie and Jerry Isler

Nerve Whiz joins EMG Whiz (www.emgwhiz.com), an interactive web-based simulator designed by Zach to teach medical professionals how to interpret electromyography (EMG) studies in real time. EMG Whiz is used by both practicing doctors and neuromuscular training programs.



Beyond web-based and mobile applications, the JINF is projected to play a major role in the education and career development of University of Michigan neurology trainees interested in neuromuscular medicine. JINF scholarships have already funded one resident's research project on pain associated with EMG, and allowed another resident to attend a national conference to learn about the latest advances in the field.

Gelb's *Introduction to Clinical Neurology* – Revised and Updated



In 2010, Doug Gelb published a substantially revised version of his popular medical student text *Introduction to Clinical Neurology*. The

book covers the

material that clinicians need to know in order to assess and manage the patients they will encounter in general medical practice. The focus throughout is on the “how” and “why” of clinical neurology.

Doug is an outstanding teacher who is in charge of and gives most of the lectures in the M2 sequence “Diseases of the Nervous System” and directs the M3 four-week required neurology student clerkship. He has received the Status Pedagogicus Award for teaching excellence from our residents on four separate occasions, and the Kaiser Permanente Award for Clinical Teaching from the Medical School in 2003, and was a recipient of the ANA's Distinguished Neurology Teacher Award in 2000. Doug has served as chair of both the Consortium of Neurology Clerkship Directors and the A.B. Baker Section of Neurologic Educators. When Doug originally applied for a faculty position he was very clear about his career goals: he said that he wanted to see patients and teach, and that he hoped to make it through his entire career without ever writing a grant application. So far he has succeeded in not writing a grant, and it appears that he is on his way to achieving his other goals as well!

You can read more about each of these faculty members and others by visiting our website at:
www.med.umich.edu/neurology/

New Faculty in Sleep



Dr. Neeraj Kaplish



Dr. Anita Shelgikar

Our Sleep Disorders Center, one of the largest in the country, completes more than 5,000 sleep studies annually in its 20-bed laboratory. In 2009, we were recognized by the American Academy of Sleep Medicine as one of the first Comprehensive Academic Sleep Programs of Distinction in the U.S. (there are only three nationwide). In the past two years, we have recruited two new Neurology faculty to the program.

Dr. Neeraj Kaplish trained in neurology at the University of Toledo and completed fellowships in clinical neurophysiology and in sleep medicine here. His interests include interactions between epilepsy and sleep disorders, the role that sleep disorders and sleep deprivation may play in imbalance and falls in older persons, perception of sleep versus wakefulness in insomnia patients, and a new, somewhat heterogeneous class of sleep problems collectively called “sexsomnias.” Dr. Kaplish also serves as assistant director of the Sleep Laboratories.

Anita Shelgikar, MD, trained in neurology at Emory University, and served as chief of neurology for the VAMC in Louisville, KY before moving to the University of Utah for a sleep fellowship. Dr. Shelgikar's interests focus on clinical approaches to the assessment of excessive daytime sleepiness, the impact of sleepiness on driving, and in collaboration with Louise O'Brien, PhD, is investigating the impact on mothers and newborns of sleep-disordered breathing during pregnancy. Dr. Shelgikar serves as director of the ACGME-approved Sleep Medicine Fellowship that now trains seven post-residency sleep specialists each year.

Epilepsy Program Expands



Dr. Simon Glynn



Dr. William Stacey

The epilepsy division has expanded its clinical research efforts with the recent addition of two new faculty members. Simon Glynn, MD, completed epilepsy and neuroimaging fellowship training at Mayo Clinic and the University of Pennsylvania. Simon's research uses SPECT and fMRI to visualize the large-scale neuronal dynamics that define epileptic networks, as well as the spatial and temporal evolution of these dynamics in the seconds to minutes that precede clinical seizure onset. On a practical level, these advanced imaging modalities are important for contemporary epilepsy surgery, with the long-term goal of identifying epileptic networks that may be used to direct placement of the sensing and stimulating electrodes. Dr. Glynn has also served as the local site principal investigator of the Epilepsy Phenotype-Genotype Project (EPGP), an international multicenter study designed to identify novel genes underlying epilepsy predisposition and pharmacoresistance to antiepileptic drugs.

William Stacey, MD, PhD, trained in neurology and completed an epilepsy fellowship at the University of Pennsylvania. Dr. Stacey's lab applies biomedical engineering techniques of electrode design, computational analysis and neural modeling to identify and classify abnormal signals in the brain that are associated with seizures. The goal is to advance understanding of the network effects that cause seizures in order to develop methods that can detect and prevent them using implantable anti-seizure devices. Dr. Stacey, who received his PhD in biomedical engineering from Case Western Reserve, was recently awarded a K08 grant from the NIH to support his pursuit of these studies.



Ken Casey awarded 1st AAN Mitchell B. Max Award in Pain

This April at the AAN annual meeting, Kenneth Casey, MD, will be the first recipient of the Mitchell B. Max Award in Pain, recognizing an individual for outstanding work in the field of neuropathic pain. Over the course of more than 40 years, Dr. Casey carried out careful, detailed investigations of pain processing using state-of-the-art methods as they evolved, resulting in many seminal, empiric observations. Congratulations Ken!



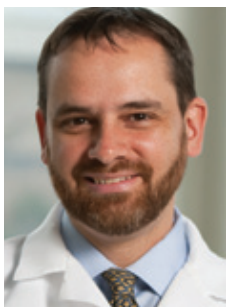
Eva Feldman President-Elect of the ANA

Eva Feldman, MD, PhD, has been designated president-elect of the ANA, and will begin to serve her two-year term in the fall. Eva is only the third woman in the 136-year history of the ANA to be elected president of the organization, and continues a strong tradition of Michigan faculty serving as president, including Russell DeJong (1965-66), Sid Gilman (1989-90), and Michigan faculty alumni Anne Young (2002-03) and Bob Macdonald (2010-11). Kudos to Dr. Feldman!



Sid Gilman Receives MCAS Award

Sid Gilman, MD, was given the Medical School Alumni Society 2010 Distinguished Achievement Award. This award honors U-M Medical School alumni/ae or faculty members who have typified the Michigan tradition of excellence. Sid, the William J. Herdman Distinguished University Professor of Neurology, was honored for his substantial accomplishments including nearly 400 publications and nine books and outstanding service, including having served as chair of the department from 1977 to 2004.



Jeff Kutcher Named AAN Donald M. Palatucci Advocate of the Year

Jeffrey Kutcher, MD, was named the 2011 AAN Donald M. Palatucci Advocacy Leadership Forum Advocate of the Year. The award recognizes the exemplary efforts of graduates of the Donald M. Palatucci Advocacy Leadership Forum. Jeff was recognized for his work to champion improved care and treatment for sports-related neurologic injuries through the establishment of the Sports Neurology Section in the AAN, development of the University of Michigan NeuroSport Program, and his work with national sports organizations.



Vikas Kotagal Receives Society of Nuclear Medicine Prize

In June 2010, at the annual meeting of the Society of Nuclear Medicine, Vikas Kotagal, MD, PGY4, received third-place prize for Brain Imaging Council Young Investigator Award for clinical research he carried out under the mentorship of Drs. Nico Bohnen and Roger Albin.



The DeJong Society to meet in Honolulu, Hawaii on April 12th

Please join the Michigan Neurology faculty, alumni and friends at the DeJong Society reception and dinner at the Outrigger Canoe Club in Honolulu on Waikiki Beach on Tuesday evening, April 12th.

If you are planning to be in Hawaii for the AAN annual meeting, please put the DeJong Society dinner on your calendar. Details will be forthcoming soon. For questions in the meantime, please contact Maria Grupe at mgrupe@umich.edu.



Visit us on Facebook as "University of Michigan Department of Neurology"

If you have news you would like to share for our next newsletter or on our Facebook page, please email: mgrupe@umich.edu.

For additional information about the Department of Neurology, please contact:

Maria Grupe
Director of Development
734-763-6184
mgrupe@umich.edu

Executive Officers of the University of Michigan Health System:
Ora Pescovitz, Executive Vice President for Medical Affairs;
James O. Woolliscroft, Dean, U-M Medical School; Douglas Strong, Chief Executive Officer, U-M Hospitals and Health Centers;
Kathleen Potempa, Dean, School of Nursing

The Regents of the University of Michigan: Julia Donovan Darlow, Ann Arbor; Laurence B. Deitch, Bingham Farms; Denise Ilitch, Bingham Farms; Olivia P. Maynard, Goodrich; Andrea Fischer Newman, Ann Arbor; Andrew C. Richner, Grosse Pointe Park; S. Martin Taylor, Grosse Pointe Farms; Katherine E. White, Ann Arbor; Mary Sue Coleman, *ex officio*

The University of Michigan is a non-discriminatory, affirmative action employer. The University of Michigan Health System is committed to Total Quality.

Copyright © 2011 The Regents of the University of Michigan, Ann Arbor, Michigan, 48109

MMD 110039