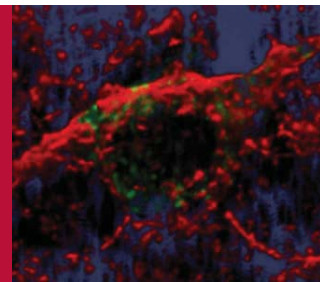


# Recent Advances in Beta Cell Biology: Scientific and Clinical Implications

Hosted by the Banting and Best Diabetes Centre, University of Toronto

**October 16-17, 2009, Toronto, Canada**



**Sheraton Centre Toronto, 123 Queen St. West, Toronto, Canada**

The **Banting and Best Diabetes Centre** is delighted to host this official academic satellite symposium of the **International Diabetes Federation's 20th World Diabetes Congress**. Since the discovery of insulin in 1922, scientists and physicians at the University of Toronto have played a leading role in elucidating the scientific basis of type 1 and type 2 diabetes, and in formulating and evaluating new therapies for patients with diabetes. Central to the development and treatment of diabetes is the insulin-producing pancreatic beta cell. The program will highlight very recent advances in our understanding of beta cell biology with a focus on translational relevance and implications for the treatment of both type 1 and type 2 diabetes. This satellite symposium will appeal to scientists, clinicians, and trainees by providing an opportunity to engage in a timely scientific interchange on multiple aspects of beta cell function.

## Guest Faculty

**Susan Bonner-Weir, PhD**  
Senior Investigator,  
Joslin Diabetes Center  
Associate Professor of Medicine,  
Harvard Medical School  
Boston, Massachusetts, USA

**Peter Butler, MD**  
Larry Hillblom Islet Research  
Center at UCLA  
Los Angeles, California, USA

**Marc Y. Donath, MD**  
Division of Endocrinology and  
Diabetes, University Hospital  
Zurich, Switzerland

**Yuval Dor, PhD**  
Department of Cellular  
Biochemistry and Human Genetics  
The Hebrew University-Hadassah  
Medical School  
Jerusalem, Israel

**Ele Ferrannini, MD**  
University of Pisa  
Pisa, Italy

**Leif Groop, MD, PhD**  
Department of Clinical  
Sciences/Diabetes &  
Endocrinology, Lund University  
University Hospital Malmö  
Malmö, Sweden

**Andrew Hattersley, DM, FRCP**  
Peninsula Medical School,  
Institute of Biomedical and  
Clinical Science  
Exeter, United Kingdom

## Preliminary Program

*\*Program subject to change*

### October 16, 2009

- 7:25 Registration and continental breakfast  
8:20 Welcome ..... Daniel Drucker, Program Chair

#### BIOLOGY OF THE BETA CELL

Chair: Michael Wheeler, University of Toronto

- 8:30 Molecular phenotypes of the normal beta cell ..... Frans Schuit  
9:10 Molecular physiology of the normal beta cell ..... Guy A. Rutter  
9:50 Signal transduction in the islet beta cell ..... Susumu Seino  
10:30 New aspects of beta cell dysfunction and islet inflammation ..... Marc Donath  
11:10 Refreshment break

#### ABSTRACT PRESENTATIONS: EMERGING BETA CELL SCIENCE

- 11:30 Presenters to be announced  
12:30 Lunch

#### MECHANISMS UNDERLYING DEVELOPMENT, REGENERATION AND SURVIVAL OF BETA CELLS

Chair: Minna Woo, University of Toronto

- 1:15 Proliferation and regeneration of beta cells ..... Yuval Dor  
1:55 Beta cell neogenesis ..... Susan Bonner-Weir  
2:35 Regulation and dysregulation of beta cell mass and turnover ..... Peter Butler  
3:15 Refreshment break

#### NEW THERAPIES FOR DIABETES

Chair: Bernard Zinman, University of Toronto

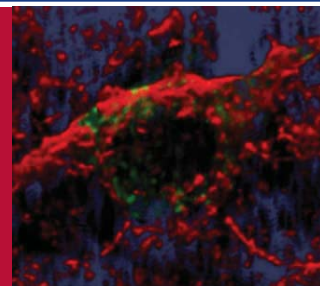
- 3:35 Prevention of Type 2 diabetes ..... Steven Kahn  
4:15 Immunomodulatory and regenerative therapies for Type 1 diabetes ..... Kevan Herold  
4:55 Incretin-based therapies for Type 2 diabetes ..... Michael Nauck  
5:35 Poster presentations reception  
7:00 Adjournment

[www.betacell2009.ca](http://www.betacell2009.ca)

# Recent Advances in Beta Cell Biology: Scientific and Clinical Implications

Hosted by the Banting and Best Diabetes Centre, University of Toronto

**October 16-17, 2009, Toronto, Canada**



**Sheraton Centre Toronto, 123 Queen St. West, Toronto, Canada**

## Guest Faculty

**Kevan Herold, MD**  
Professor of Immunobiology and  
Medicine,  
Yale University School of  
Medicine  
New Haven, Connecticut, USA

**Steven E. Kahn, MB, ChB**  
Professor of Medicine, Division of  
Metabolism, Endocrinology and  
Nutrition,  
University of Washington  
VA Puget Sound Health Care  
System  
Seattle, Washington, USA

**Michael Nauck, MD, PhD**  
Professor of Medicine, Diabetes  
Center  
Bad Lauterberg, Germany

**Constantin Polychronakos, MD**  
Professor, Department of  
Pediatrics & Human Genetics  
Director, Pediatric Endocrinology,  
McGill University Health Centre  
(Children's Hospital)  
Montréal, Canada

**Guy A. Rutter, PhD**  
Professor and Head of  
Department of Cell Biology,  
Division of Medicine, Imperial  
College  
London, United Kingdom

**Frans Schuit, PhD**  
Director Gene Expression Unit,  
Department of Molecular Cell  
Biology  
Katholieke Universiteit Leuven  
Leuven, Belgium

**Susumu Seino, MD, DM Sci**  
Professor, Division of Cellular and  
Molecular Medicine  
Kobe University Graduate School  
of Medicine  
Kobe, Japan

## Preliminary Program

### October 17, 2009

8:00 Continental breakfast

#### THE GENETICS OF DIABETES

Chair: To Be Announced

8:30 Genetics and the development of Type 1 diabetes . . . . .Constantin Polychronakos

9:10 Genetic risk and development of Type 2 diabetes . . . . .Leif Groop

9:50 Pharmacogenetics in diabetes:  
the beta cell defect determines treatment response . . . . .Andrew Hattersley

10:30 Refreshment break

#### ABSTRACT PRESENTATIONS

10:45 Presenters to be announced

#### CLOSING LECTURE

Chair: Daniel Drucker, University of Toronto

11:45 Integrating basic and clinical science . . . . .Ele Ferrannini

12:25 Symposium adjournment

## Call for Abstracts

Participants are invited to submit abstracts for oral and poster presentations. Abstracts related to all aspects of beta cell biology are welcome. Detailed information regarding abstract guidelines and submission deadlines will be available in early January 2009 on the symposium website: [www.betacell2009.ca](http://www.betacell2009.ca)

**ABSTRACT SUBMISSION OPENS:** January 7, 2009

## Accreditation

The Office of Continuing Education and Professional Development, Faculty of Medicine, University of Toronto is an accredited provider for the Royal College of Physicians and Surgeons of Canada (RCPSC), the American Medical Association (AMA) and the European Accreditation Council for Continuing Medical Education (EACCME).

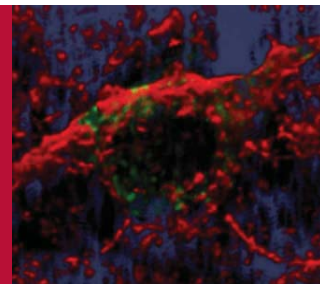
As a result of a reciprocal agreement between the EACCME and the AMA, European registrants may claim AMA Category 1 credits as equivalent.

[www.betacell2009.ca](http://www.betacell2009.ca)

# Recent Advances in Beta Cell Biology: Scientific and Clinical Implications

Hosted by the Banting and Best Diabetes Centre, University of Toronto

**October 16-17, 2009, Toronto, Canada**



**Sheraton Centre Toronto, 123 Queen St. West, Toronto, Canada**

## Registration & Fees

### Academics, Physicians and Health Care Related Professionals

Advance registration fee: \$150 CAD  
On-site registration fee: \$190 CAD

### Students, Residents, and Fellows (with documentation of status)

Advance registration fee: \$75 CAD  
On-site registration fee: \$100 CAD

### Non-academic Fee

*This fee applies to participants who do not fall into any of the categories above.*

Advance registration fee: \$200 CAD  
On-site registration fee: \$240 CAD

**All fees in Canadian dollars**

### Registration Fee Includes:

- Attendance at all scientific sessions and poster presentations reception
- Continental breakfasts, refreshment breaks, lunch
- Program handbook including abstracts

### On-line registration and payment:

The on-line registration system opens October 16, 2008. Registration fees are payable by American Express, MasterCard or Visa.

## Online Registration

Register online at:

[www.betacell2009.ca](http://www.betacell2009.ca)

## Cancellation

Refunds will be issued if notice of cancellation is received by October 9, 2009. A processing fee of \$40.00 CAD will be retained on all cancellations. Requests for refunds must be in writing. Registrations are not transferable.

## For Information

Office of Continuing Education  
and Professional Development  
Faculty of Medicine, University of Toronto  
500 University Avenue, Suite 650  
Toronto, Ontario M5G 1V7

Telephone: 416.978.2719

Toll free: 1.888.512.8173

Fax: 416.946.7028

Email: [info-BDC0902@cmeteronto.ca](mailto:info-BDC0902@cmeteronto.ca)

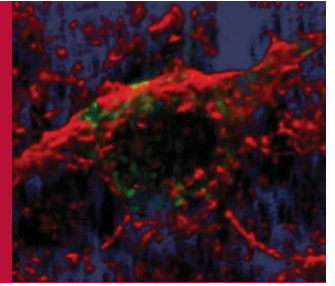


[www.betacell2009.ca](http://www.betacell2009.ca)

# Recent Advances in Beta Cell Biology: Scientific and Clinical Implications

Hosted by the Banting and Best Diabetes Centre, University of Toronto

**October 16-17, 2009, Toronto, Canada**



**Sheraton Centre Toronto, 123 Queen St. West, Toronto, Canada**

## Accommodation

A limited block of rooms is being held at **The Hilton Hotel**, 145 Richmond Street West, located one block southwest of the Sheraton Centre, site of the Symposium. Rooms at the special rate of \$229.00 CAD/night are available **until the guest room block fills, or September 14, 2009, whichever occurs first**. Hotel rooms in Toronto are at a premium; please book early to avoid disappointment.

The Hilton Hotel has established the following website for symposium participants to book hotel reservations:

<http://www.hilton.com/en/hi/groups/personalized/TORHIHH-BANA08-20091012/index.jhtml>

**Group Name:** Banting and Best Diabetes Centre

**Group Code:** BANA08

Telephone: +1-416-869-3456, Fax: +1-416-869-3187

## Location Map



## Acknowledgements

We gratefully acknowledge our supporters:

**Merck Frosst**

**Novo Nordisk**

Beta cell image at the top: 3-D confocal microscopy reconstruction of a beta cell (secretory granules in green; lipid rafts in red) by Dr. A. Tomas, University of Geneva, Switzerland

[www.betacell2009.ca](http://www.betacell2009.ca)