

Fall 2017



MICHIGAN MEDICINE
UNIVERSITY OF MICHIGAN

Silver Club Memory Programs

Together, we make every moment matter.

Greetings from Silver Club!

Summer has faded and fall is now firmly in place. Every season is important and different at Silver Club.

Our member art show and reception on September 27th at the North Campus Resource Center was a big hit! In an effort to build from that success, we are planning to host an art show and sale in 2018 which will commemorate Silver Club's 20-year anniversary. We will be featuring extraordinary art created by Silver Club members.

The Annual Turner Geriatric Jewelry sale is Sunday, November 12, 2017 from 1-4pm at East Ann Arbor Health and Geriatrics Center, 4260 Plymouth Road, Ann Arbor, MI 48109. Costume and Vintage Jewelry will be donated for this fun, fabulous, sale! All proceeds support the Geriatric Social Work and Community Programs.

Silver Club will soon be offering our Holiday greeting cards for sale. This is a collaborative effort between Silver Club and the Alzheimer's Association, Michigan Great Lakes chapter. The artwork was created by the members of Silver Club and these cards will be available for purchase early November through the Silver Club office.

Sincerely,
Douglas Dault, LMSW, LMFT
Director, Silver Club Memory Programs



Silver Club Mum Garden 2017

Silver Club Garden

By: Patricia Hall, Silver Club Memory Program Specialist

This Fall, the Silver Club life skills group planted a beautiful mum garden outside the front entrance of the Silver Club. These plants were donated to the Silver Club Programs from Zywicki's Greenhouse Inc. in Belleville, Michigan. The colors of the flowers bloomed into beautiful yellow, burgundy, white and rust colors. The life skills group was very excited and waited in great anticipation to see their hard work grow and blossom. The entire garden has been filled with these gorgeous mums. Some of the flowers are planted next to herbs that the group also planted in the Silver Club summer garden. To the group's amazement, some of the mums that were planted last year re-blossomed this year! A few watchful scarecrows carefully guard the plants to make sure that no unwanted birds or critters come into the garden. Since the weather has been agreeable, the Silver Club members are still able to water the garden daily and sit in amazement as they admire the beautiful colors of Fall.

New Dance/Movement Therapy Interns

By: Kaitlynn Sinke, Silver Club Memory Program Specialist

Silver Club is excited to welcome two Dance/Movement Therapy interns to our expanding team! Lizzie and Natalie are students of Eastern Michigan University's Pre-Dance/Movement Therapy track. Silver Club is honored to be serving as an internship site for both of these ladies during their class in the summer and fall semesters. Our club members adore the positive energy both Lizzie and Natalie bring to the program. We wanted to share more about our fantastic interns through a brief interview while they continue to prepare for their next chapter of school pursuing master's degrees in dance/movement therapy.



Lizzie Shillington



Natalie Kurzava

1. Why are you interested in dance/movement therapy specifically?

Lizzie: I am interested in dance/movement therapy because of my love for dance and psychology. As a dancer, I hated the thought that I would have to say goodbye to something that I loved, so I knew this was what I was meant to do when I discovered it. I want to share dance with others in a therapeutic and non-judgmental environment. Dance connects the body, the soul, and the mind, and I want to help others experience this in any way possible.

Natalie: I am interested in dance/movement therapy because I think it's important to realize how the mind and the body connect. I also have a loving passion for dance and helping others.

2. What has your experience been like while interning at Silver Club?

Lizzie: I have had an incredible experience here at Silver Club! I have met so many amazing staff and members who have helped me grow as a dance/movement therapist and as a person. I have had so many great opportunities to get to know all of the members and connect with them through dance/movement therapy.

Natalie: My experience at the Silver Club has been very eye opening. I am very grateful to experience the dance/movement therapy process. I enjoy spending time with the Silver Club members and participating in the activities. It's very heart-warming to see and experience the benefits.

3. We want to know more.... Tell us a fun fact about yourself!

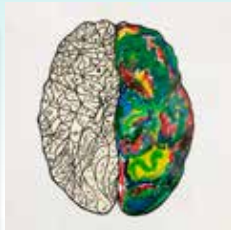
Lizzie: My favorite styles of dance have to be lyrical, contemporary, and jazz. While they're very different, they allow the dancer a chance to express a story and their emotions. Also, when I was really young, I tried hula dance and gymnastics! They were so much fun, and I hope I get to do them again one day!

Natalie: Fun fact about me is that my favorite style of dance is modern.

"Beautiful Minds" Art Exhibition

By: Elaine Reed, Silver Club Memory Program Specialist

The Silver Club "Beautiful Minds" artist reception was well attended with over 60 attending including SC artists, family members and community guests. Over 32 original art pieces were displayed and will be on exhibit at the NCRC location throughout December 12, 2017.



Save the Date!

December 1- 28, 2017

Silver Club Programs
Art Exhibition

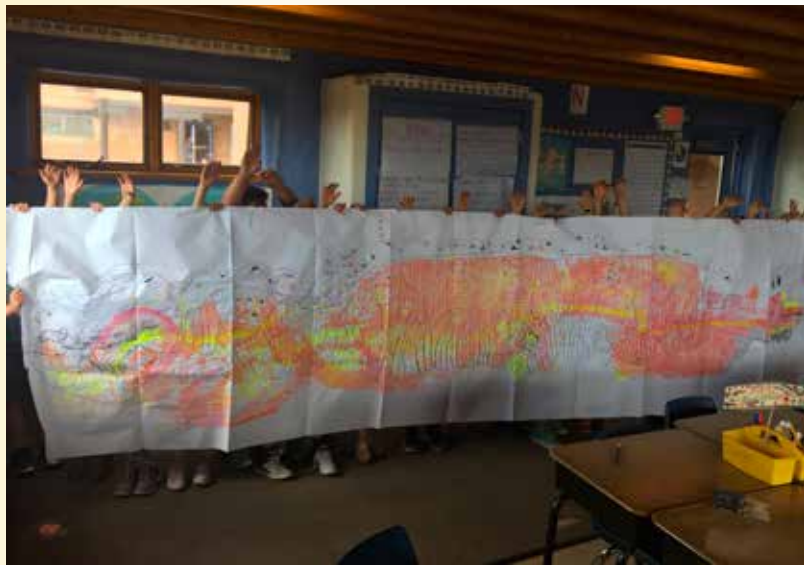
Ypsilanti District Library
5577 Whittaker Rd,
Ypsilanti, MI 48197



The Dragon Challenge!

By: Jeanne Kero, Silver Club Memory Program Specialist

I traveled to Northern New Mexico recently to visit family. While I was there, I taught a Zentangle Class to my granddaughter's second grade class. The students loved the class and wanted to do more tangles. I also brought the dragon that was created by the Friday afternoon Silver Club members and had the Anansi School second graders be the feet and hands. I left the dragon with them along with more paper to create a dragon of their own. Maybe they will be inspired to make a longer and more colorful dragon with the white paper I left them. Anansi students...let the Dragon Challenge begin!



Alzheimer's Association Holiday Card 2017

The artwork on this holiday card was created through a collaboration of the women of the Elderberry Club. It is a mixed media collage art piece using pastels and handmade papers.

Individual cards will be available for purchase early November through the Silver Club office.

Meet Our Staff and Volunteers

Staff: Lisa Chasse, Doug Dault (Director), Patricia Hall, Jeanne Kero, Kalpana Kothari, Elaine Reed, Danielle O'Brien, Laura Rice-Oeschger, Maya Rowland, Kaitlynn Sinke, Kathi Tobey, Marianna Voica, Cara Yonovitz

Interns: Natalie Kurzawa

Volunteers: Jasmine Chang, Polly Connor, Vanessa Dinh, Dorothy Doss- RN, Alice Fishman, Stephanie Francalancia, Sara Holmes, Myrna Miller, Bianca Nelson, Jacqueline Roe, Tammy Salo, Lizzie Shillington, Jennifer Steiner- RN, Cathy Strachan, Randy Thackston, Mary Wisgerhof, Heidi Yeager

Musicians: Lori Fithian, Pat Grimes, Ann Hunsberger, Sara Keller

TheraPaws: Margie Hough & Sassy, Gloria Van Alstine & Annie, Mariah

Advisory Board: Beverly Bagozzi, Julie DeLoria, Alice Fishman, Sara Holmes (Board Chair), Leslie Kamil, Clare Kolevar, Myrna Miller, Jacqueline Roe, Cathy Strachan, Julie Young



Silver Club Memory Programs
2401 Plymouth Road, Suite C
Ann Arbor, MI 48105

MICHIGAN MEDICINE
UNIVERSITY OF MICHIGAN

An Opportunity to Support Silver Club

The goal at Silver Club is to always accept families in need of educational and social opportunities for their loved-ones with dementia, even if they are experiencing financial difficulties. We use a sliding-fee scale so that each family pays what it can afford. The balance comes from grants and assistance from a wide array of supporters.

How You Can Help:

Be an ambassador – promote the Silver Club by referring to our program families who are caring for a person with memory loss.

Volunteer – there are many ways to help, including spending time with members during program hours, participating on Silver Club committees, or helping with special, time-focused projects.

Make a gift – the Silver Club relies significantly on public funding and contributions. “Gifts in kind” such as artwork, books and equipment make an immediate impact. The easiest way to make a monetary gift is through our online link:

<https://leadersandbest.umich.edu/find/#/give/basket/fund/367384>.

For more information about giving, contact us at (734) 998-9352.

Contact Information

Silver Club Memory Programs
2401 Plymouth Road, Suite C
Ann Arbor, MI 48105

Phone: (734) 998-9352

GerMedSilverClub@umich.edu

Www.facebook.com/SilverClubMemory

9:00 AM - 5:00 PM, Mon-Fri

Sponsors & Community Partners

Silver Club is primarily funded by donations and member fees. We are also supported by:

- U-M Geriatrics Center
- Ann Arbor Area Community Foundation
- Area Agency on Aging 1-B
- Brookdale National Group Respite Program
- Friends of the U-M Hospital
- Medicaid Waiver Program
- Veterans Affairs