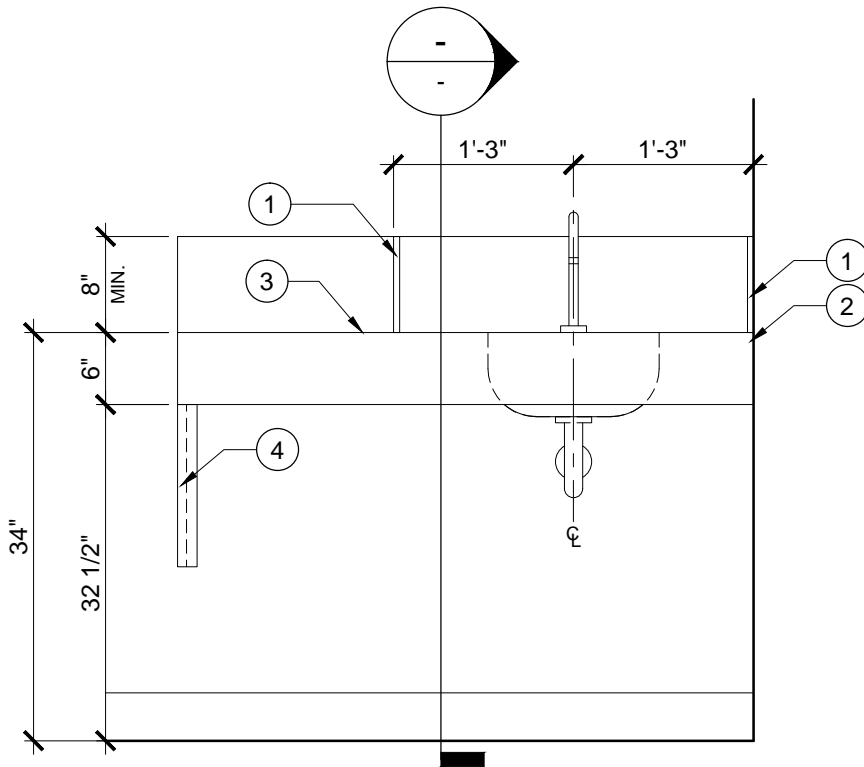


**SINK COUNTER
PATIENT ROOM - SECTION**



- ① 1/2" THICK SOLID SURFACE SPLASH GUARD WHEN DRY WORK COUNTER IS ADJACENT.
- ② 1/2" THICK SOLID SURFACE COUNTERTOP ON WATER RESISTANT BACKER BOARD WITH INTEGRAL BACKSPASH .
- ③ SOLID SURFACE SINK WITHOUT OVERFLOW DRAIN, REFER TO DESIGN GUIDELINES FOR INFORMATION ON SINK AND HARDWARE.
- ④ 1/2" SOLID SURFACE APRON ON WATER RESISTANT BACKER BOARD.
- ⑤ SOLID WOOD "FRENCH CLEAT" WITH WALL BLOCKING BEHIND GYP BOARD AT EACH END.
- ⑥ 1/2" THICK SOLID SURFACE ON WATER RESISTANT BACKER BOARD - SCREW INTO WOOD BLOCKING AT BOTH ENDS.
- ⑦ WALL BLOCKING BEHIND GYP BOARD BEYOND.



**SINK COUNTER
PATIENT ROOM - ELEVATION**



- ① 1/2" THICK SOLID SURFACE SPLASHGUARD
- ② SOLID SURFACE ON WATER RESISTANT BACKER BOARD COUNTERTOP AND APRON
- ③ DRY WORK COUNTER
- ④ SOLID SURFACE ON WATER RESISTANT BACKER BOARD END PANEL