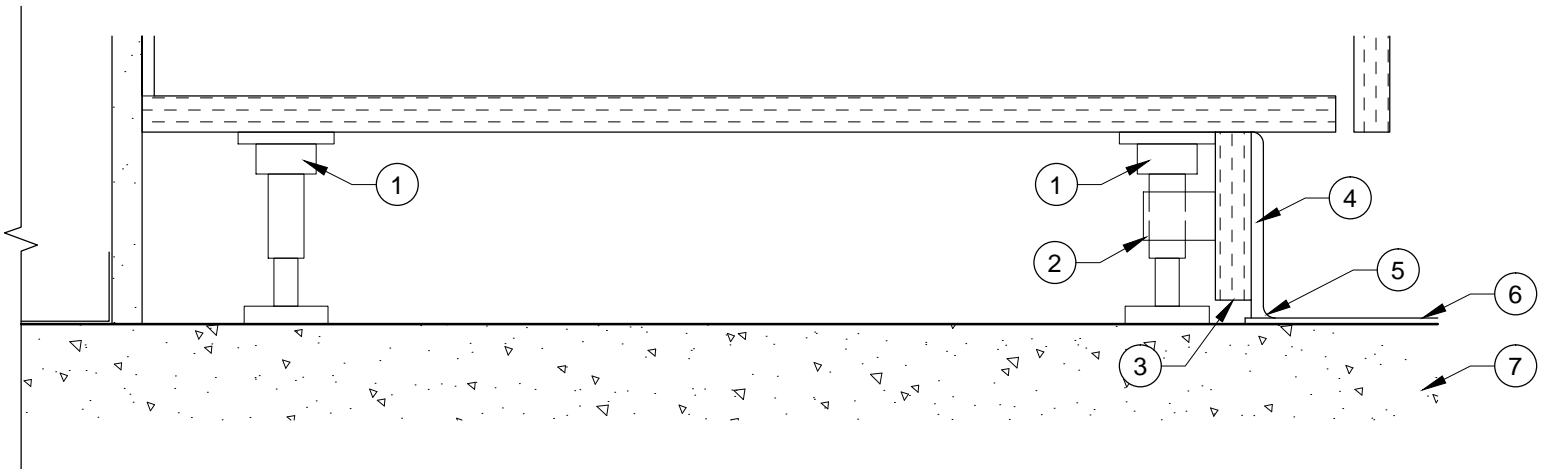


- ① CABINET LEVELER LEGS
- ② TOE KICK CLIP
- ③ CLIP-ON PLYWOOD TOE KICK - HOLD OFF CONCRETE 1/2"
- ④ RESILIENT BASE
- ⑤ CONTINUOUS SEALANT
- ⑥ FINISH FLOOR
- ⑦ CONCRETE SLAB



STANDARD BASE CABINET
LEG LEVELER DETAIL