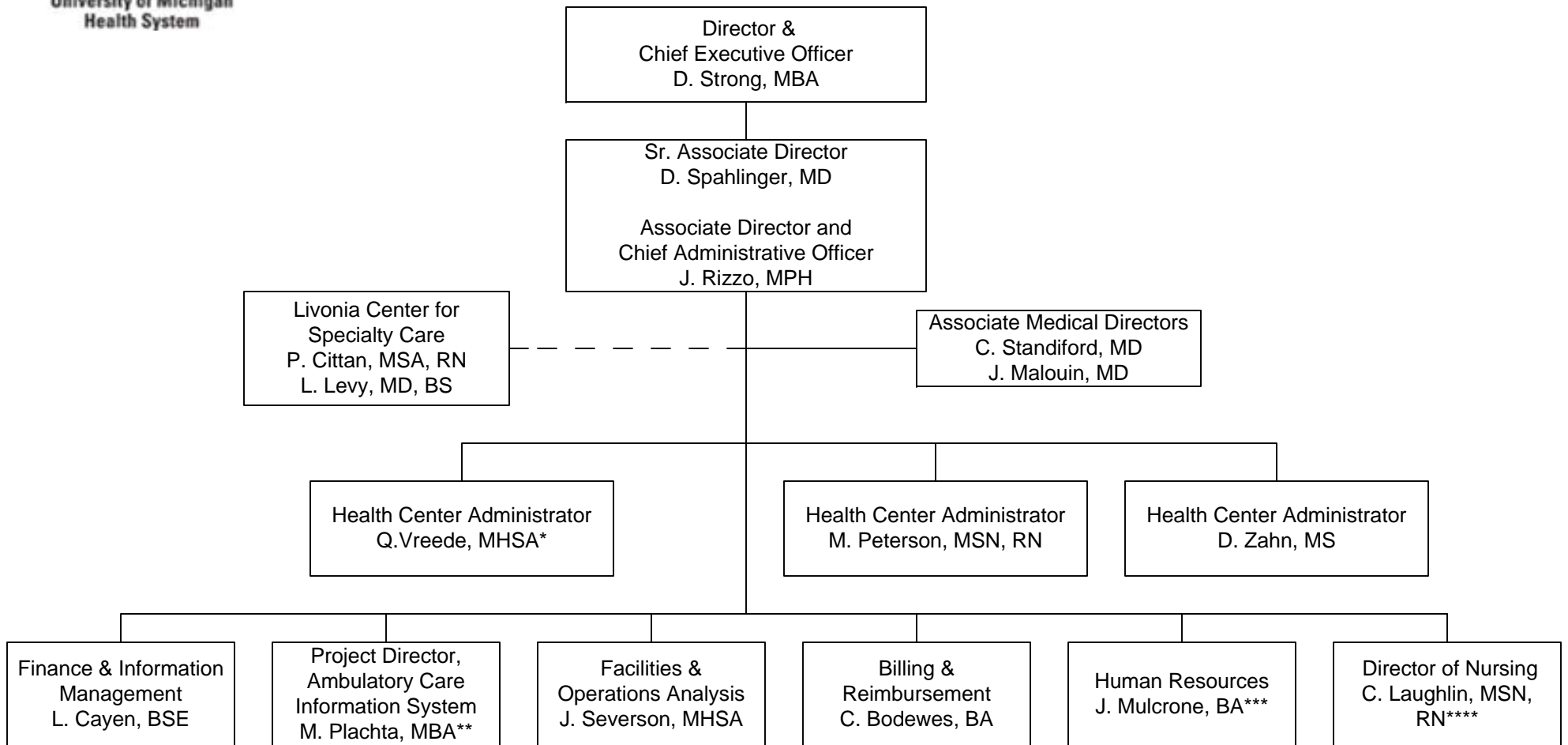




UNIVERSITY OF MICHIGAN HEALTH SYSTEM (UMHS)  
 UNIVERSITY OF MICHIGAN HOSPITALS AND HEALTH CENTERS  
 ADMINISTRATIVE STRUCTURE  
**AMBULATORY CARE SERVICES**



Q. Vreede, HCA

- Briarwood Family Medicine
- Chelsea Health Center
- Dexter Family Medicine
- Family Medicine at Domino Farms
- Ypsilanti Health Center

M. Peterson, HCA

- Briarwood Health Associates
- Briarwood Medical Group
- Brighton Health Center
- Canton Health Center
- Howell Pediatrics
- Saline Health Center
- Taubman General Medicine

D. Zahn, HCA

- East Ann Arbor Health Center & Geriatrics Center
- Livonia Health Center
- West Ann Arbor Health Center
- MedSport:
  - Ann Arbor Ice Cube
  - Brighton Health Center
  - Domino's Farms
  - Livonia Health Center

CLINICAL DEPARTMENTS & PROGRAMS

- |                           |                                   |
|---------------------------|-----------------------------------|
| ACS Anesthesia            | ACS Ophthalmology                 |
| ACS Cancer Center         | ACS Orthopaedic Surgery           |
| ACS Cardiovascular Center | ACS Otolaryngology                |
| ACS Dermatology           | ACS Pediatrics                    |
| ACS Geriatrics Center     | ACS PM & R                        |
| ACS Internal Medicine     | ACS Surgery                       |
| ACS Neurology             | ACS Urology                       |
| ACS Neurosurgery          | Livonia Center for Specialty Care |
| ACS Ob/Gyn                |                                   |

\* Dual reporting with Family Medicine  
 \*\* Dual reporting with MCIT  
 \*\*\* Dual reporting with Human Resources  
 \*\*\*\* Dual reporting with Nursing