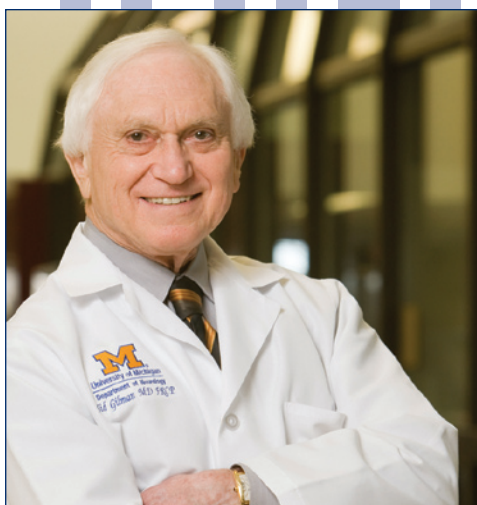




LEADING THE WAY

In Memory and Aging Research



The Michigan Alzheimer's Disease Research Center (MADRC) is one of 32 Alzheimer's research centers in the U.S. funded by the National Institute on Aging, part of the National Institutes of Health. Established at the University of Michigan Health System in 1989, the MADRC is devoted to research, clinical care, and providing current information on Alzheimer's disease and related disorders.

Our new office is located at:
2101 Commonwealth Blvd., Suite D
Ann Arbor, MI 48105
(734) 764-8445

Email: ask-madrc@umich.edu

Web page: <http://www.med.umich.edu/alzheimers>

The Regents of the University of Michigan

Julia Donovan Darlow • Laurence B. Deitch • Olivia P. Maynard • Rebecca McGowan • Andrea Fischer Newman • Andrew C. Richner • S. Martin Taylor • Katherine E. White • Mary Sue Coleman, *ex officio*

Nondiscrimination Policy Statement

The University of Michigan, as an equal opportunity/affirmative action employer, complies with all applicable federal and state laws regarding nondiscrimination and affirmative action, including Title IX of the Education Amendments of 1972 and Section 504 of the Rehabilitation Act of 1973. The University of Michigan is committed to a policy of nondiscrimination and equal opportunity for all persons regardless of race, sex, color, religion, creed, national origin or ancestry, age, marital status, sexual orientation, gender identity, gender expression, disability, or Vietnam-era veteran status in employment, educational programs and activities, and admissions. Inquiries or complaints may be addressed to the Senior Director for Institutional Equity and Title IX/Section 504 Coordinator, Office of Institutional Equity, 2072 Administrative Services Building, Ann Arbor, Michigan, 48109-1432, 734-763-0235, TTY 734-647-1388. For other University of Michigan information, call 734-764-1817.



MADRC

Michigan Alzheimer's
Disease Research Center

Since it was first established in 1989, the Michigan Alzheimer's Disease Research Center (MADRC) has been conducting research to learn more about the diseases that affect memory and aging. Working in partnership with other federally-funded Alzheimer's disease research centers, scientists at the MADRC have made exciting progress in refining state-of-the-art brain scanning techniques to allow for earlier diagnosis of diseases that cause dementia and exploring new, cutting-edge treatments.

Why is research important?

There are currently more than 5 million Americans living with Alzheimer's disease. Unless something can be done to prevent or delay its onset, this number is expected to triple by the year 2050.

Research is key

to finding a cure and helping the millions of people already affected. When patients and families agree to participate in research studies, they make an enormous contribution to future generations and advance our knowledge of Alzheimer's disease and related disorders.

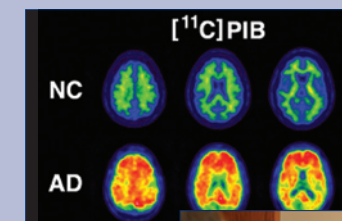
What kinds of studies are being conducted at the MADRC?

MADRC studies generally fall into three different types:

Brain imaging studies use tools such as MRI scans and PET scans to study brain changes that may help in the diagnosis and monitoring of specific brain diseases.

Clinical drug trials test the safety and effectiveness of a medication or treatment strategy.

Observational studies follow older adults over a period of time to observe specific changes, such as how an individual's health or memory may change over time. The U-M Memory and Aging Project (UM-MAP) is the primary memory and aging study at the MADRC. This study does not require additional medications or experimental treatments. Participants are usually seen yearly for a complete evaluation and are followed over several years.



Brain amyloid imaging in Alzheimer's patients. AD=Alzheimer's disease, NC=normal control



We need your help!

The MADRC is seeking volunteers to participate in our currently enrolling studies. Please complete the attached form if you are interested in being considered for a study.



Here's how you can help

Advances in the prevention and treatment of Alzheimer's disease and related conditions are only possible when people participate in research.

MADRC researchers are currently looking for eligible research volunteers who are experiencing early signs of memory difficulty or dementia. MADRC studies aim to find the earliest diagnostic techniques for Alzheimer's disease and related disorders and the best way to slow down or prevent the symptoms of these types of illnesses. Participants receive a free assessment by qualified health care professionals.

Please contact us to learn more about how you or a loved one can volunteer to participate in an MADRC study.

Clinical care

It is important that research participants continue to see their own doctor while they are enrolled in a study. Although study participants will receive periodic evaluations, this does

not substitute for regular clinical care. Research volunteers may wish to talk to their physician about participation in a study.

How are participants' rights protected?

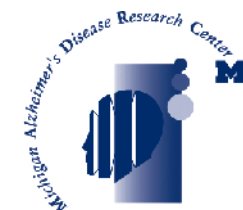
MADRC studies have been approved by the University of Michigan's Institutional Review Board (IRB). The IRB includes physicians, researchers, and community advocates who approve and monitor all studies at the University of Michigan and ensure that the rights of participants are protected.

Patient confidentiality is strictly protected and names and other unique identifying information is never used in study reports or when data is shared with other Alzheimer's Disease Centers.

How to contact us

Phone: **(734) 764-8445**
 Email: **ask-madrc@umich.edu**
 Web: **http://www.med.umich.edu/alzheimers**
 Mail the form on the right to:
2101 Commonwealth Blvd., Suite D
Ann Arbor, MI 48105

Thank you
 for your support of the MADRC.



Interested in research?

Please fill out this form, detach from brochure, place in an envelope, and mail to MADRC, 2101 Commonwealth Blvd, Ste D, Ann Arbor, MI 48105. A Study Coordinator from the MADRC will contact you about current studies.

Name: _____

Address: _____

City/State: _____

ZIP Code: _____

Home Phone: _____

Work/Cell Phone: _____

E-mail: _____

Date of Birth: _____

Please check items of interest:

- Participate in research
- Volunteer
- Obtain resource materials
- Donate
- Other: _____

