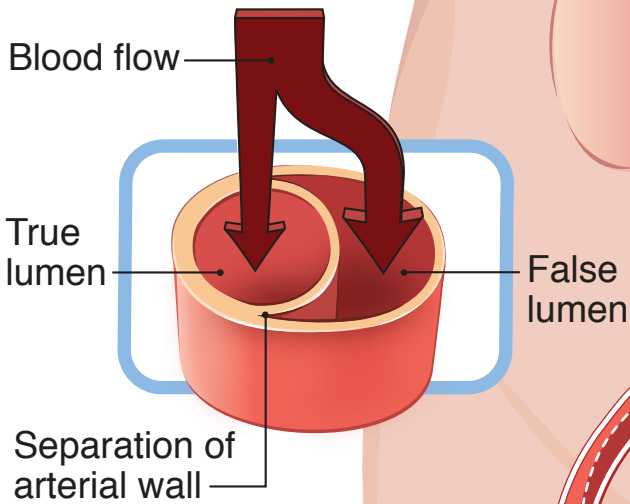
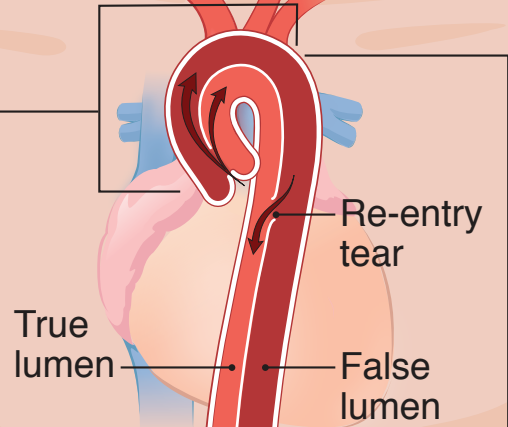


# Types of Aortic Dissections

## Type A Dissection: *Immediate surgical intervention*

Unless decrease in blood flow to other organs



## Type B Dissection: *Medical management if not complicated*

Type B Complications include a decrease in blood flow to:

- Kidneys
- Lower extremities
- Bowels
- Spinal cord
- Rupture

L.GAVULIC