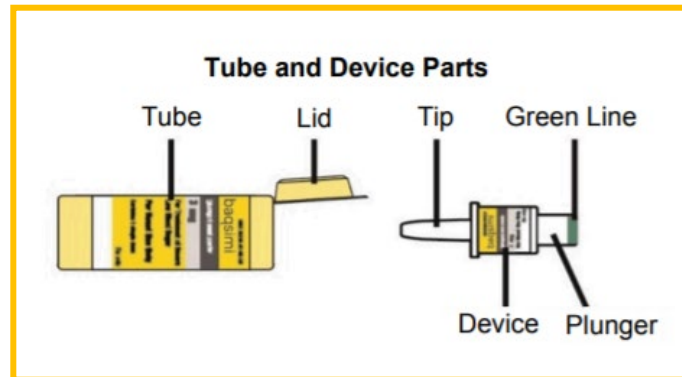


BAQSIMI® (Glucagon) 3 mg Nasal Powder

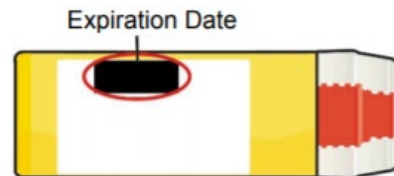
Important information about BAQSIMI®

- BAQSIMI® is a medication used to treat very low blood sugar.
- Store BAQSIMI® in the shrink-wrapped tube at room temperature.
- Do not remove the shrink wrap or open the tube until you are ready to use this medication.
- Do not push the plunger or test this medication before you are ready to use it.
- **The BAQSIMI® tube contains 1 dose of glucagon nasal powder. It cannot be reused.**
- BAQSIMI® is for nasal (nose) use only.
- BAQSIMI® will work even if you or the person receiving the medication has a cold or is taking cold medicine.
- Regularly check the expiration date on your tube of BAQSIMI®. Replace BAQSIMI® before it expires.

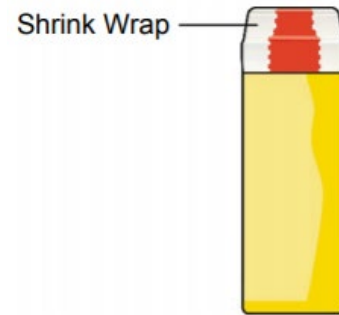


How do I prepare the dose?

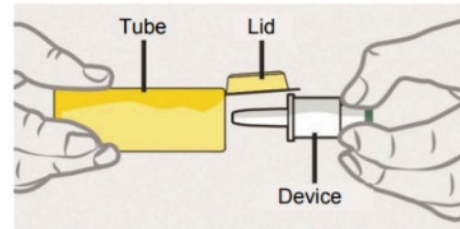
1. Check the expiration date on the tube.
Do not use the tube if it is past its expiration date.



2. Remove the shrink wrap on the tube by pulling on the red stripe.

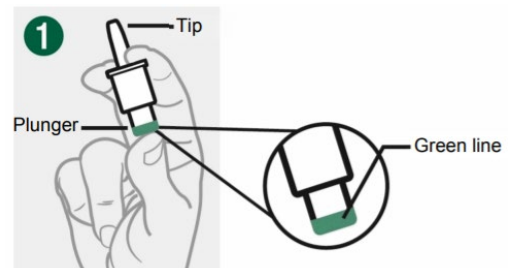


3. Open the lid and remove the device from the tube. Make sure you do not press the plunger until you're ready to use the device.

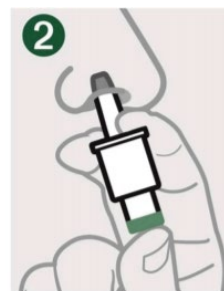


How do I give the dose?

1. Hold the device between your fingers and thumb. Do not push the plunger yet.



2. Insert the tip gently into one nostril, until your fingers are touching the outside of the nose.



3. Firmly push the plunger all the way in. **The dose is complete when the green line disappears.**



What should I do after giving the dose?

- Call for emergency help right away.
- If the person is unconscious, turn them on their side.
- Throw away the used device and tube.
- If the person does not respond after 15 minutes, you can give them another dose of BAQSIMI® if you have one available.

Disclaimer: This document contains information and/or instructional materials developed by University of Michigan (U-M) Health for the typical patient with your condition. It may include links to online content that was not created by U-M Health and for which U-M Health does not assume responsibility. It does not replace medical advice from your health care provider because your experience may differ from that of the typical patient. Talk to your health care provider if you have any questions about this document, your condition, or your treatment plan.

Author: Kelly Ruemenapp, BSN RN CPN

Edited by: Brittany Batell, MPH MSW CHES®

Images ©Lilly USA, LLC 2019. All rights reserved. Information adapted from:
pi.lilly.com/us/bagsimi-us-ifu.pdf. To learn more, visit: bagsimi.com

Patient Education by [U-M Health](https://umhealth.org) is licensed under a [Creative Commons Attribution-NonCommercial-ShareAlike 4.0 International Public License](https://creativecommons.org/licenses/by-nc-sa/4.0/). Last revised 01/2025