

Chlamydia Facts

What is chlamydia?

Chlamydia is a common STD that can infect both men and women. It can cause serious, permanent damage to a woman's reproductive system, making it difficult or impossible for her to get pregnant later on. Chlamydia can also cause a potentially fatal ectopic pregnancy (pregnancy that occurs outside the womb). Gonorrhea is a communicable disease that is reported to the health department.

How is chlamydia spread?

- You can get chlamydia by having anal, vaginal, or oral sex with someone who has chlamydia.
- If your sex partner is male, you can still get chlamydia even if he does not ejaculate (cum).
- If you've had chlamydia and were treated in the past, you can still get infected again if you have unprotected sex with someone who has chlamydia.
- If you are pregnant, you can give chlamydia to your baby during childbirth.

How can I reduce my risk of getting chlamydia?

The only way to avoid STDs is to not have vaginal, anal, or oral sex.

If you are sexually active, you can do the following things to lower your chances of getting chlamydia:

- Be in a long-term mutually monogamous relationship with a partner who has been tested and has negative STD test results
- Use latex condoms the right way every time you have sex

Am I at risk for chlamydia?

Anyone who has sex can get chlamydia through unprotected anal, vaginal, or oral sex. However, sexually active young people are at a higher risk of getting chlamydia. This is due to behaviors and biological factors common among young people. Gay, bisexual, and other men who have sex with men are also at risk since chlamydia can be spread through oral and anal sex.

Have an honest and open talk with your health care provider and ask whether you should be tested for chlamydia or other STDs. You should get tested for chlamydia every year if:

- You are a sexually active woman younger than 25 years
- You are an older woman with risk factors such as new or multiple sex partners, or a sex partner who has a sexually transmitted infection.

You should also get tested if:

- You are Gay, bisexual, or a man who has sex with men
- You are pregnant

I'm pregnant. How does chlamydia affect my baby?

If you are pregnant and have chlamydia, you can pass the infection to your baby during delivery. This could cause an eye infection or pneumonia in your newborn. Having chlamydia may also make it more likely to deliver your baby too early. If you are pregnant, you should be tested for chlamydia at your first prenatal visit. Testing and treatment are the best ways to prevent health problems.

How do I know if I have chlamydia?

Most people who have chlamydia have no symptoms. If you do have symptoms, they may not appear until several weeks after you have sex with an infected

partner. Even when chlamydia causes no symptoms, it can damage your reproductive system.

Women with symptoms may notice:

- An abnormal vaginal discharge
- A burning sensation when urinating

Symptoms in men can include:

- A discharge from their penis
- A burning sensation when urinating
- Pain and swelling in one or both testicles (although this is less common).

Men and women can also get infected with chlamydia in their rectum, either by having receptive anal sex, or by spread from another infected site (such as the vagina). While these infections often cause no symptoms, they can cause:

- Rectal pain
- Discharge
- Bleeding

You should be examined by your doctor if you notice any of these symptoms or if your partner has an STD or symptoms of an STD, such as an unusual sore, a smelly discharge, burning when urinating, or bleeding between periods.

How will my doctor know if I have chlamydia?

There are laboratory tests to diagnose chlamydia. Your health care provider may ask you to provide a urine sample or may use (or ask you to use) a cotton swab to get a sample from your vagina to test for chlamydia.

Can chlamydia be cured?

Yes, chlamydia can be cured with the right treatment. It is important that you take all of the medication your doctor prescribes to cure your infection. When taken properly it will stop the infection and could decrease your chances of having complications later on. Medication for chlamydia should not be shared with anyone.

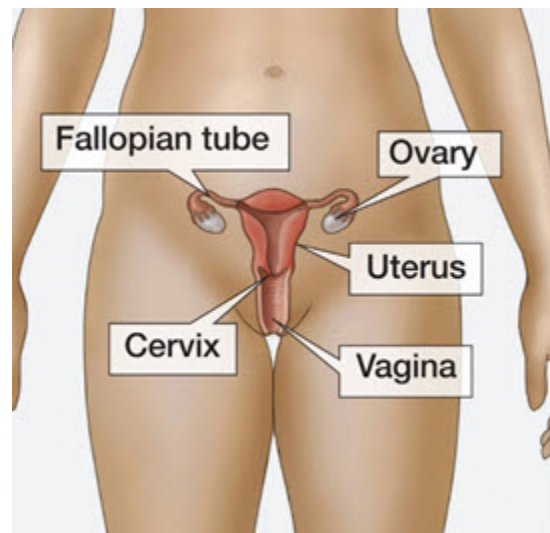
Repeat infection with chlamydia is common. You should be tested again about three months after you are treated, even if your sex partner(s) was treated.

What happens if I don't get treated?

The initial damage that chlamydia causes often goes unnoticed. However, chlamydia can lead to serious health problems.

If you are a woman, untreated chlamydia can spread to your uterus and fallopian tubes (tubes that carry fertilized eggs from the ovaries to the uterus), causing pelvic inflammatory disease (PID). PID often has no symptoms, however some women may have abdominal and pelvic pain. Even if it doesn't cause symptoms initially, PID can cause:

- permanent damage to your reproductive system
- long-term pelvic pain
- inability to get pregnant
- potentially deadly ectopic pregnancy (pregnancy outside the uterus)



Men rarely have health problems linked to chlamydia. Infection sometimes spreads to the tube that carries sperm from the testicles, causing pain and fever. Rarely, chlamydia can prevent a man from being able to have children. Untreated chlamydia may also increase your chances of getting or giving HIV – the virus that causes AIDS.

I was treated for chlamydia. When can I have sex again?

You should not have sex again until you and your sex partner(s) have completed treatment. If your doctor prescribes a single dose of medication, you should wait seven days after taking the medicine before having sex. If your doctor prescribes a medicine for you to take for seven days, you should wait until you have taken all of the doses before having sex.

Where can I get more information?

- Division of STD Prevention (DSTDP)
Centers for Disease Control and Prevention
www.cdc.gov/std
- CDC-INFO Contact Center
1-800-CDC-INFO (1-800-232-4636)
Contact CDC-INFO at: <https://wwwn.cdc.gov/dcs/ContactUs/Form>
- CDC National Prevention Information Network (NPIN)
<https://npin.cdc.gov/disease/stds>
P.O. Box 6003
Rockville, MD 20849-6003
E-mail: npin-info@cdc.gov
- American Sexual Health Association (ASHA)
<http://www.ashasexualhealth.org/stdsstis/>

Ambulatory Care Services

Chlamydia Facts

P.O. Box 13827 Research Triangle Park, NC 27709-3827
1-800-783-9877

Disclaimer: This document contains information and/or instructional materials developed by Michigan Medicine for the typical patient with your condition. It may include links to online content that was not created by Michigan Medicine and for which Michigan Medicine does not assume responsibility. It does not replace medical advice from your health care provider because your experience may differ from that of the typical patient. Talk to your health care provider if you have any questions about this document, your condition or your treatment plan.

Adapted from CDC. *Chlamydia-CDC Fact Sheet* Access at:
<https://www.cdc.gov/std/chlamydia/chlamydia-factsheet-june-2014.pdf>

Patient Education by [Michigan Medicine](#) is licensed under a [Creative Commons Attribution-NonCommercial-ShareAlike 3.0 Unported License](#). Last Revised 04/2017